



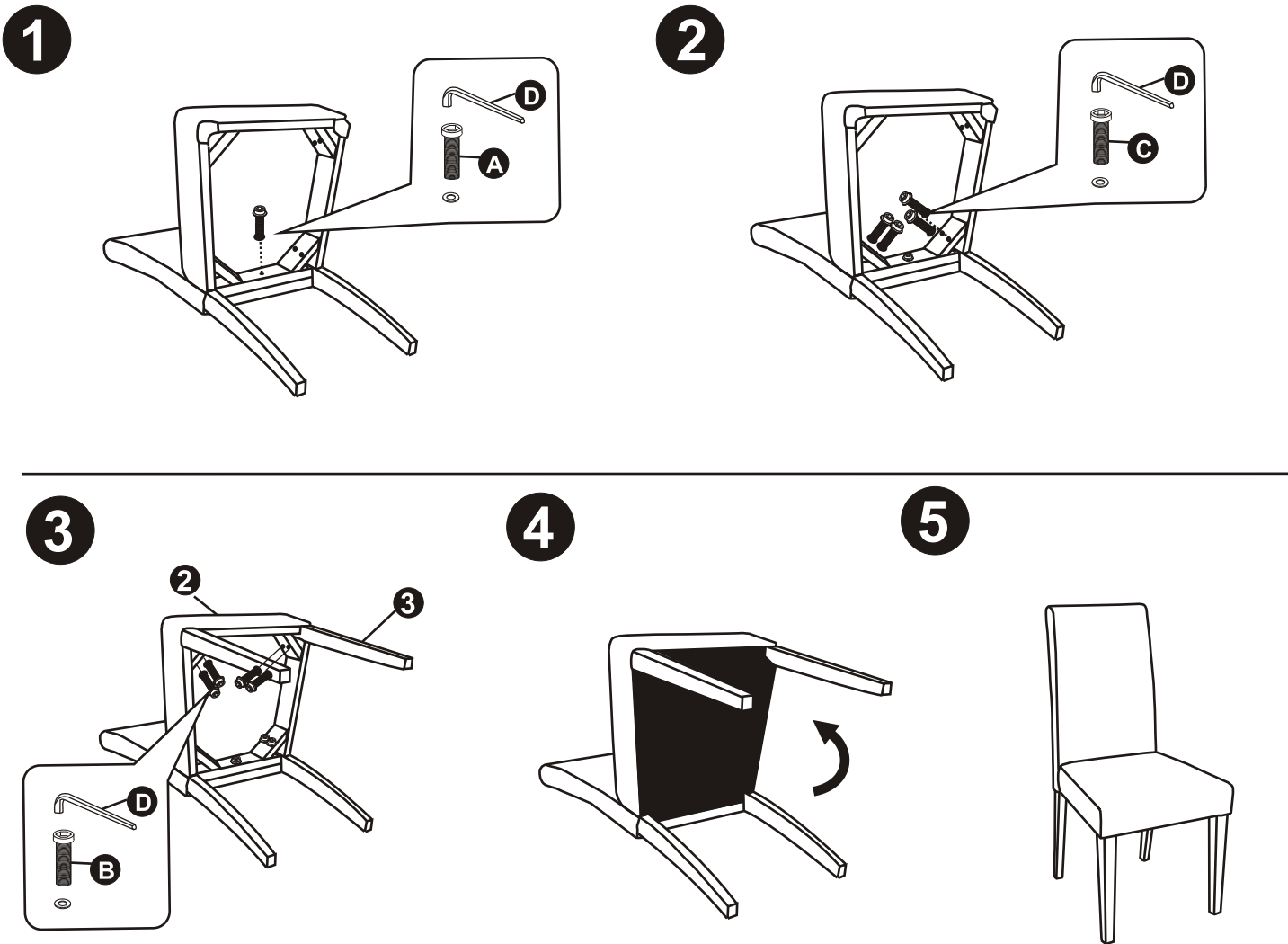
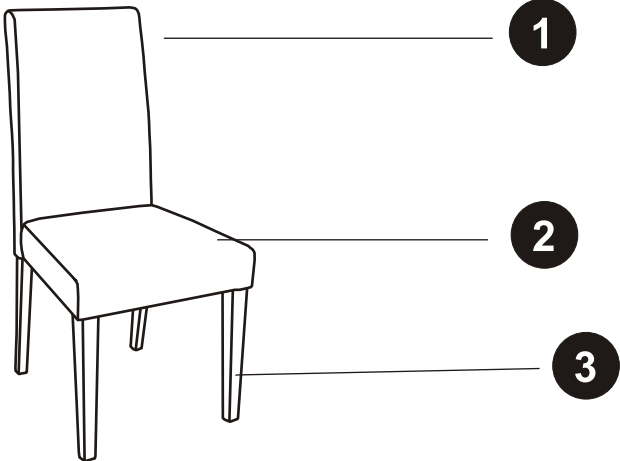


PARTS LIST	No.	PART	Qty
	1	Backrest	1
	2	Seat	1
	3	Front legs	2

PARTS LIS	No.	PART	Qty
	A	M8x40MM 	1
	B	M8x60MM 	4
	C	M8x80MM 	4
	D	Allen key 	1



## Safety Reminder, Chair WS5113-7

Never sit on the chair before it is fully assembled.

Keep children away when assembling the chair.

Never use the chair as a step stool, as this may result in life-threatening injuries.

Ensure that children do not climb on or around the chair.

Check all screws periodically to ensure they are tight and secure.

### **Chair Assembly Instructions:**

Carefully remove all parts from the packaging and arrange them clearly on a soft surface.

1.Insert the screws for the backrest, but do not fully tighten them yet.

2.Next, attach the front chair legs with the screws, and do not tighten the screws at this stage either.

3.Turn the chair over and sit on it carefully to align all components properly.

4.Only now fully tighten all the screws.

5.Fasten the lower upholstery with the hook-and-loop tape.