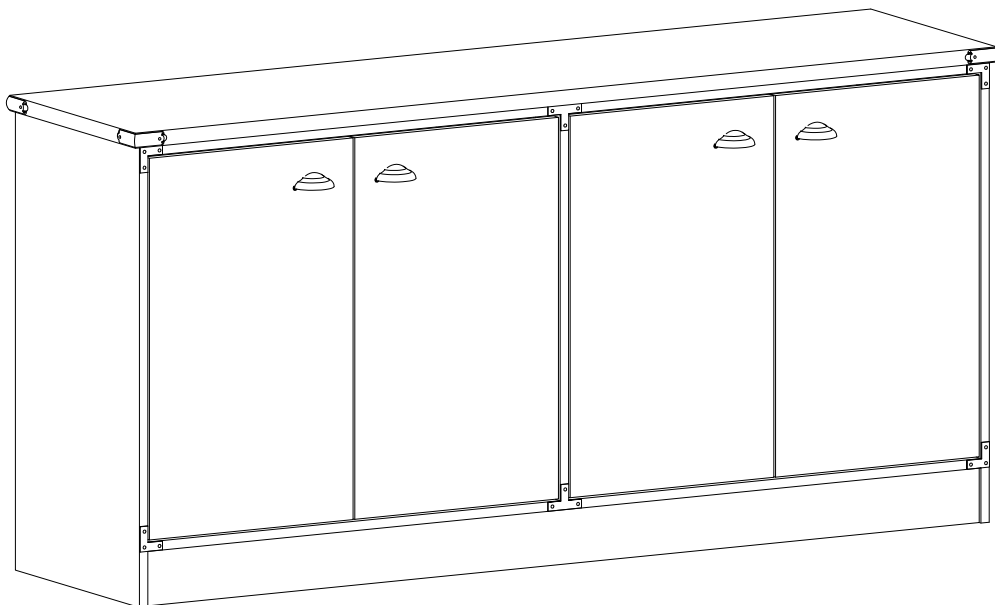


ASSEMBLY INSTRUCTIONS

Important Safety Instructions:

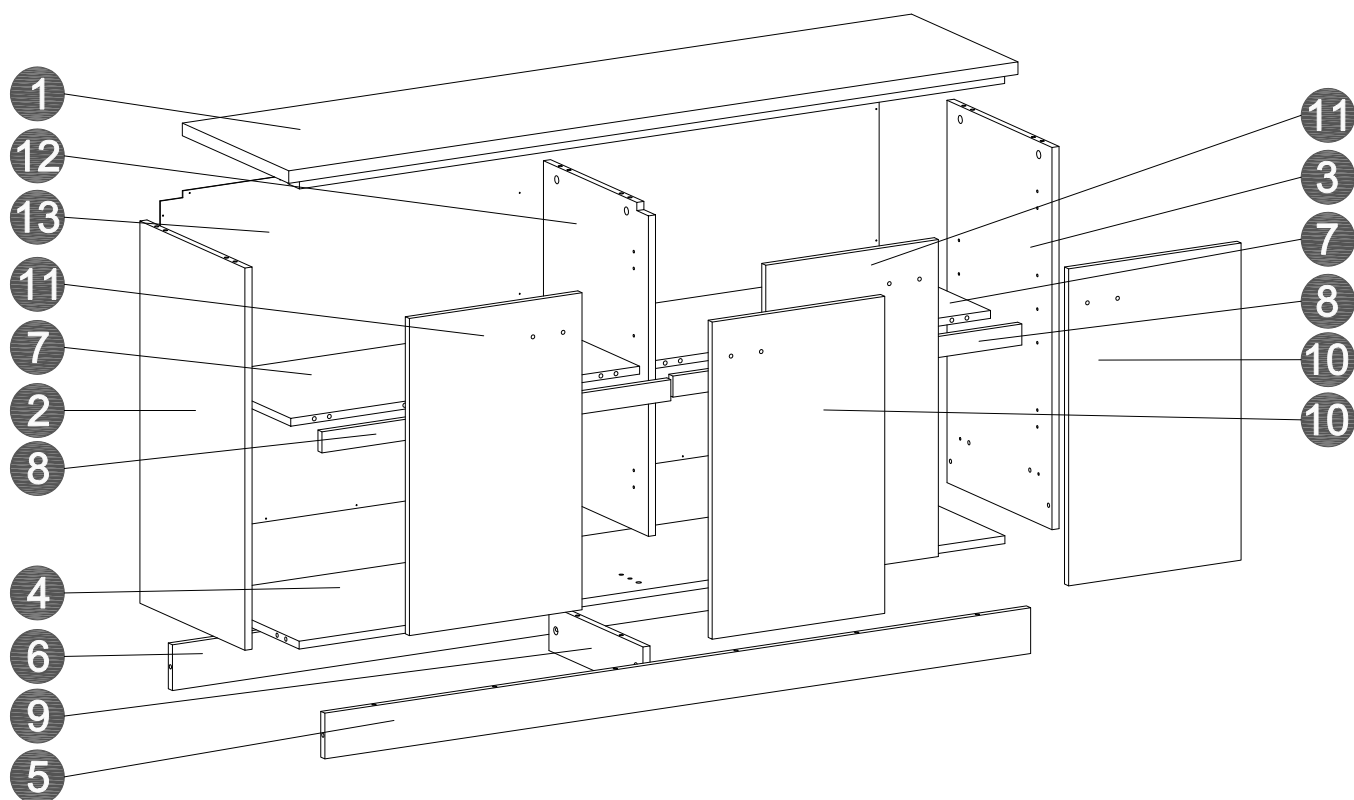
- Please read all instructions before beginning assembly
- Please make sure receive all the parcels to start the assembly
- For your safety and convenience, assembly by two people is recommended
- Use the parts and hardware lists to identify and separate each of the components included
- Save all packing materials until assembly is completed to avoid the accidental discarding of smaller parts or hardware






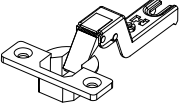
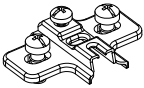

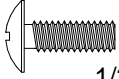

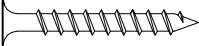
THANK YOU FOR PURCHASING


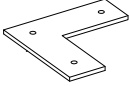
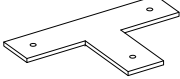

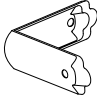
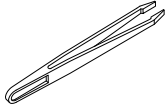
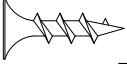

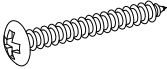
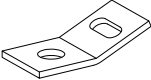
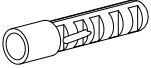

PARTS LIST

| | | | | |
|-------|-------|-------|------|-------|
| 1 X1 | 2 X1 | 3 X1 | 4 X1 | 5 X1 |
| 6 X1 | 7 X2 | 8 X2 | 9 X1 | 10 X2 |
| 11 X2 | 12 X1 | 13 X1 | | |



HARDWARE LIST

| Name | Part | Qty. | Spare |
|------|---|------|-------|
| A |  | 22 | 1 |
| B |  | 22 | 1 |
| C |  | 36 | 2 |
| D |  | 8 | |
| E |  | 8 | |
| F |  | 4 | |
| G |  1/2" Screw | 8 | 1 |
| H |  3/4" Nail | 29 | 2 |
| J |  2" Screw | 2 | |

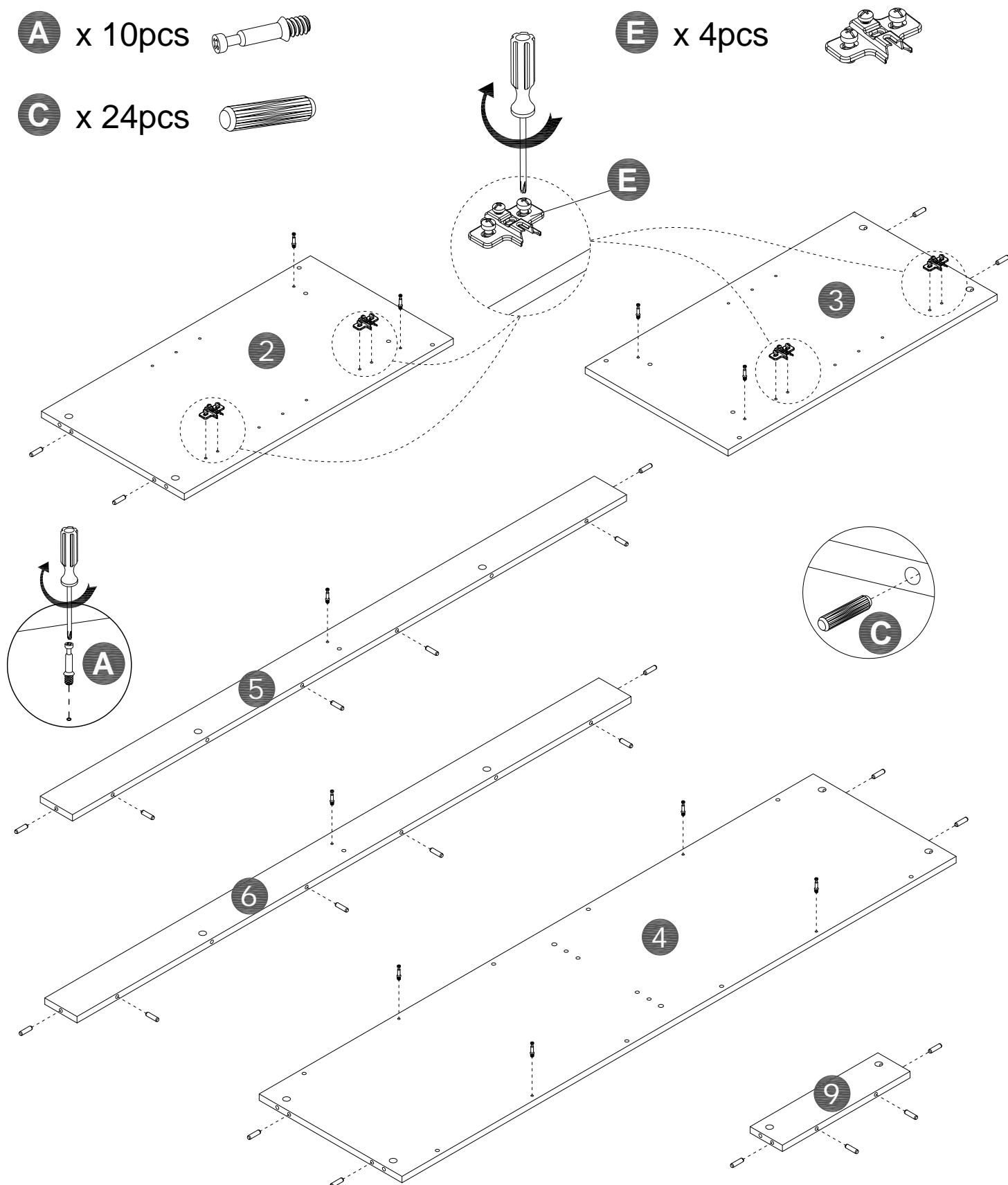
| Name | Part | Qty. | Spare |
|------|---|------|-------|
| O |  | 18 | 2 |
| P |  | 4 | |
| Q |  | 2 | |
| R |  5/6" nail | 8 | 2 |
| S |  | 4 | |
| U |  | 1 | |
| Z |  5/8" Screw | 16 | 1 |
| AA |  | 8 | |
| U1 |  | 2 | |
| U3 |  | 2 | |
| U4 |  | 1 | |
| U5 |  | 1 | |

STEP 1

A x 10pcs 

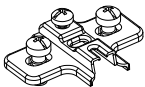
C x 24pcs 

E x 4pcs 

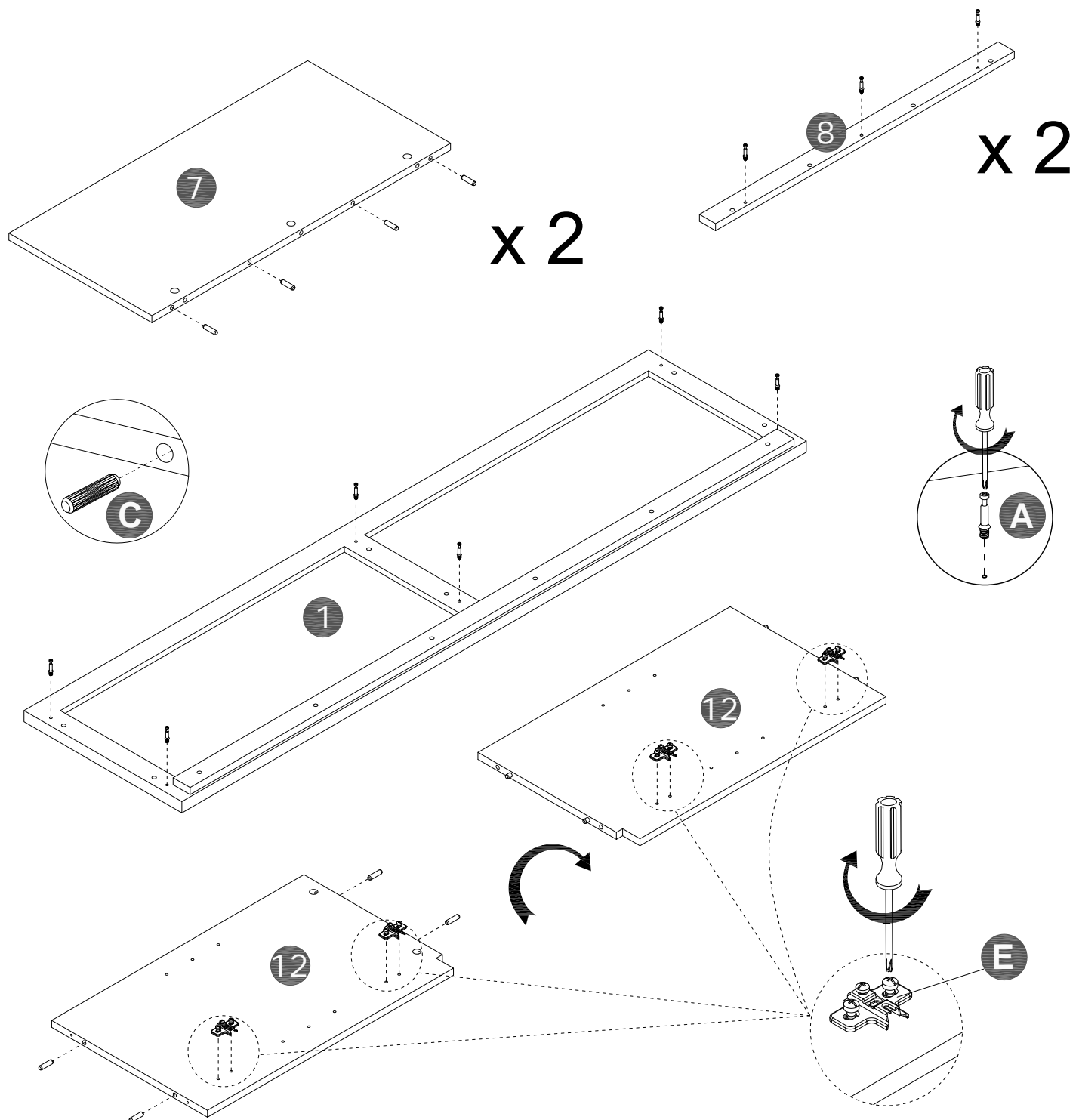


STEP 2

A x 12pcs 

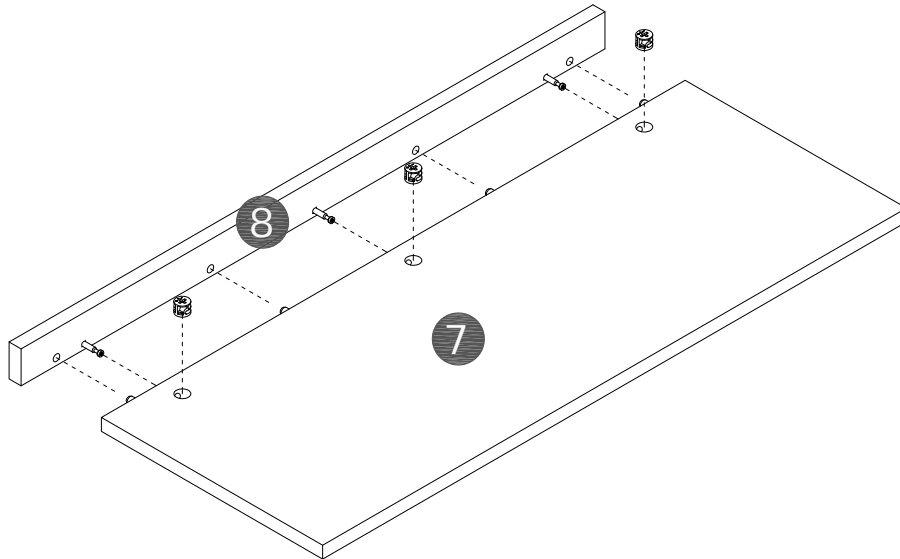
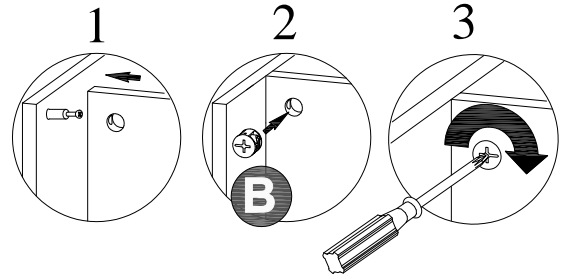
E x 4pcs 

C x 12pcs 



STEP 3

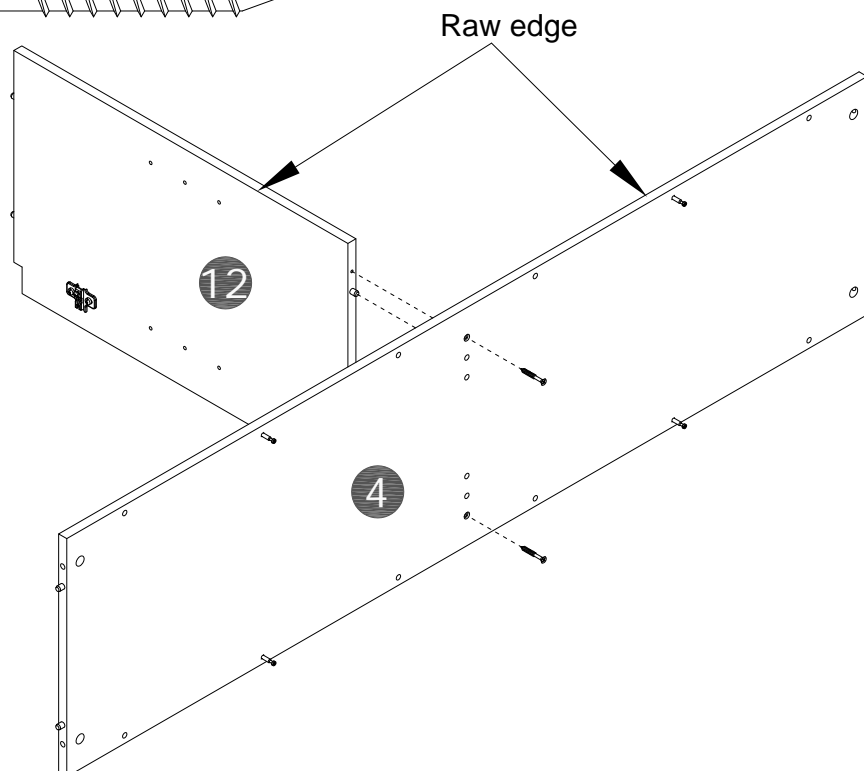
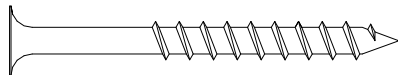
B x 6pcs



x 2

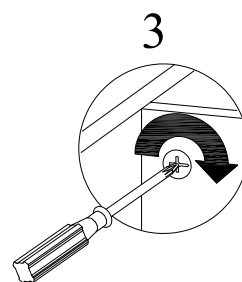
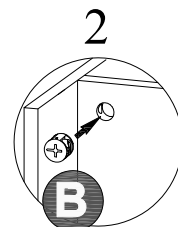
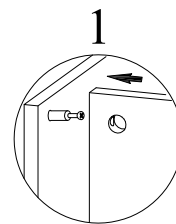
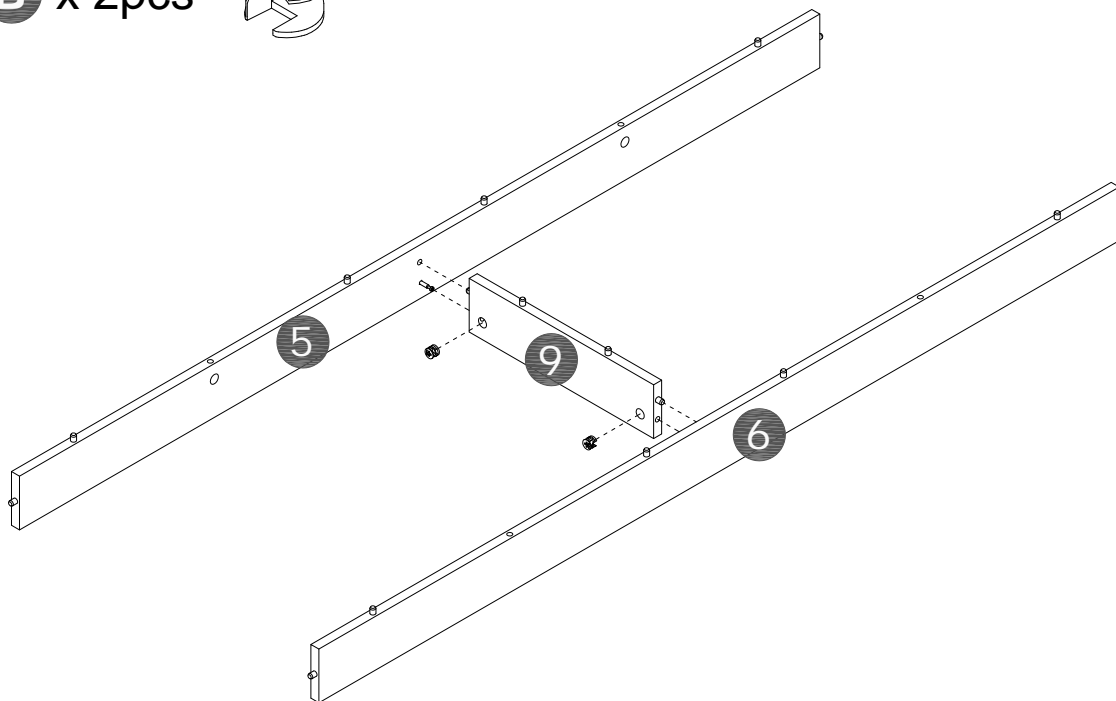
STEP 4

J x 2pcs



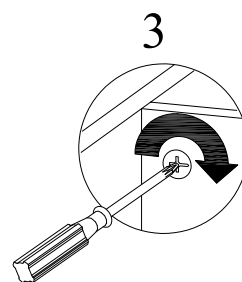
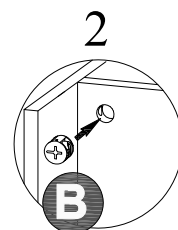
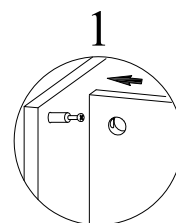
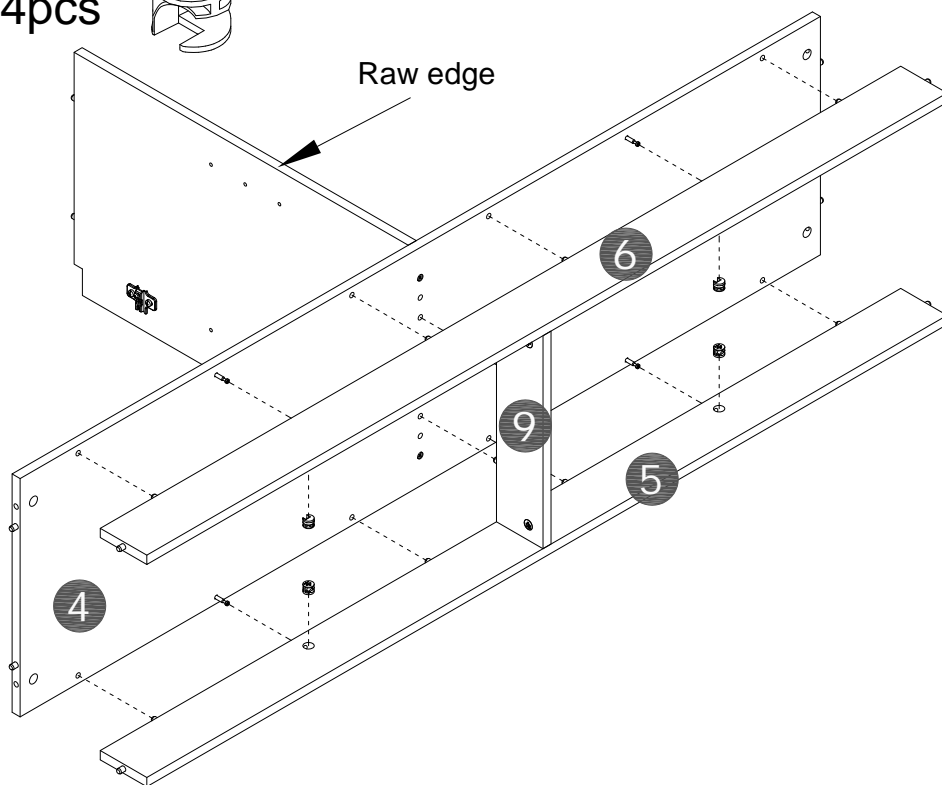
STEP 5

B x 2pcs



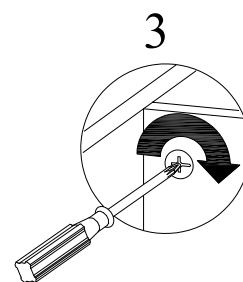
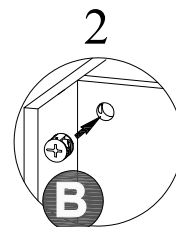
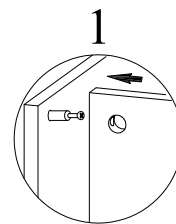
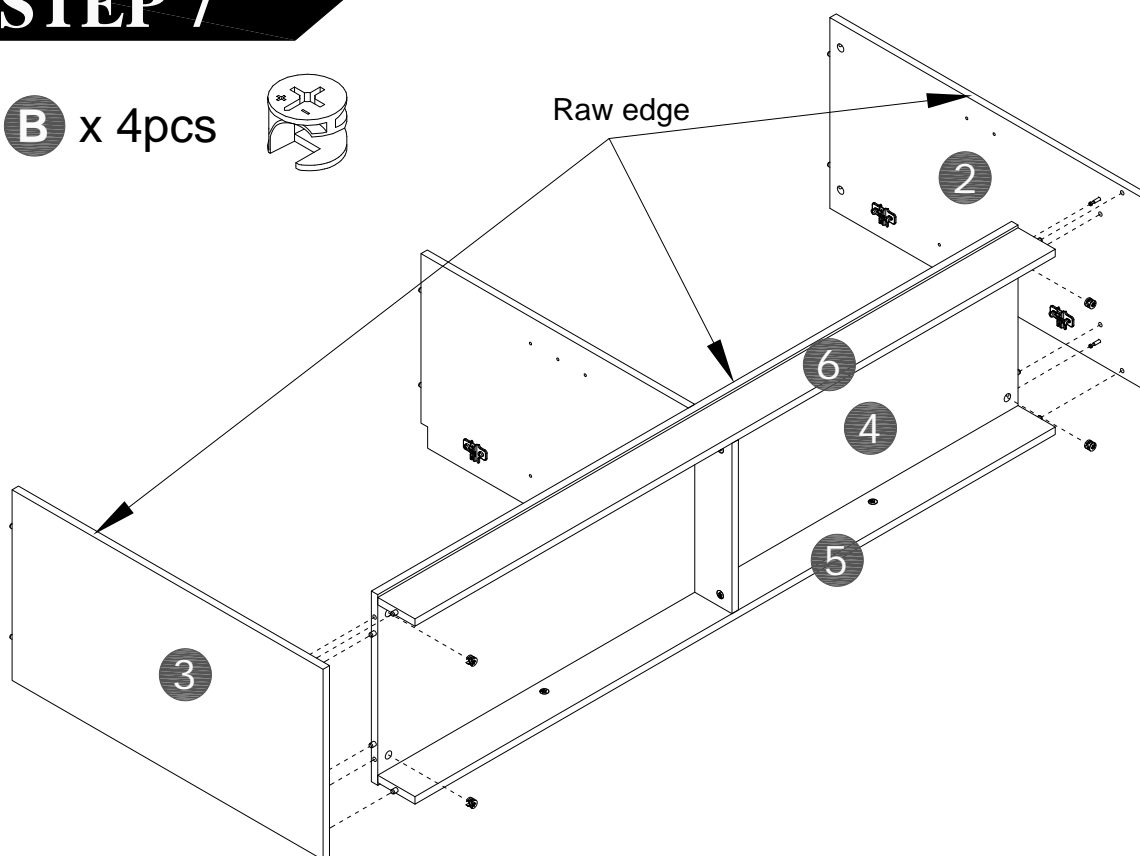
STEP 6

B x 4pcs



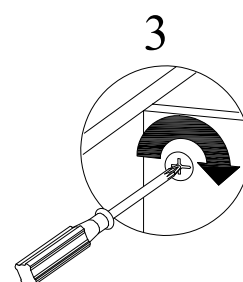
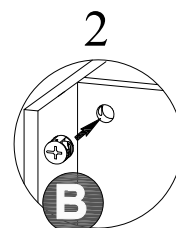
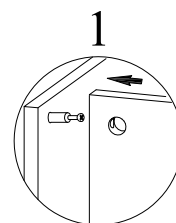
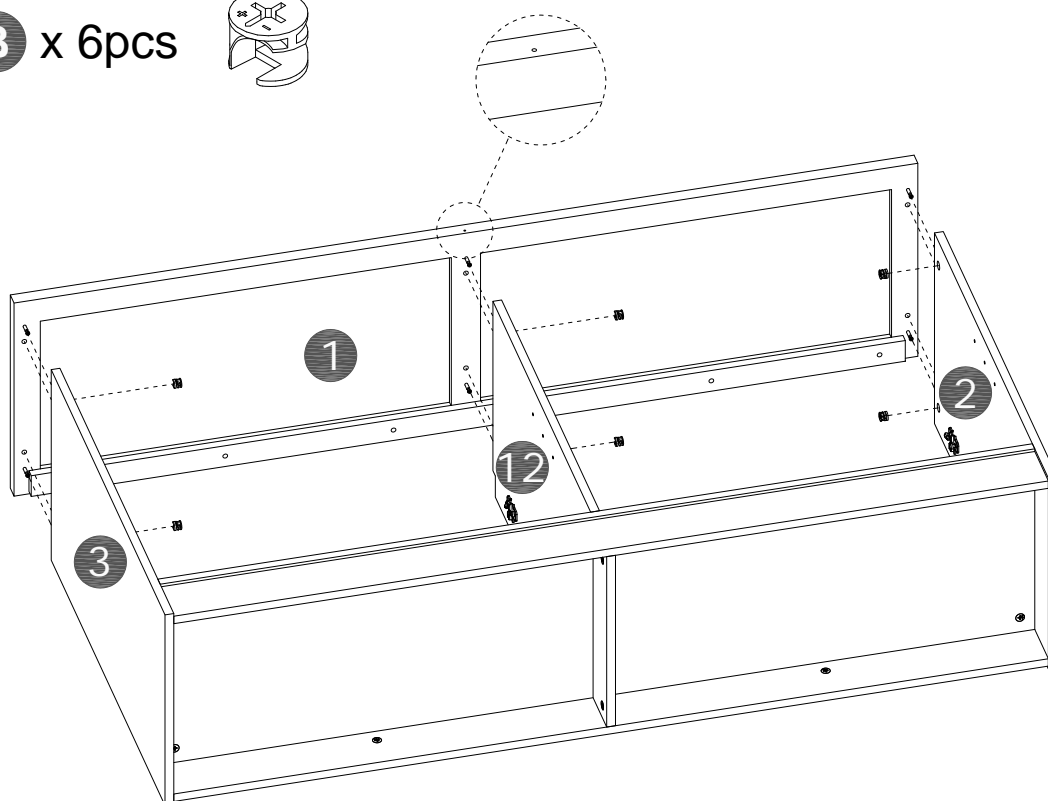
STEP 7

B x 4pcs



STEP 8

B x 6pcs



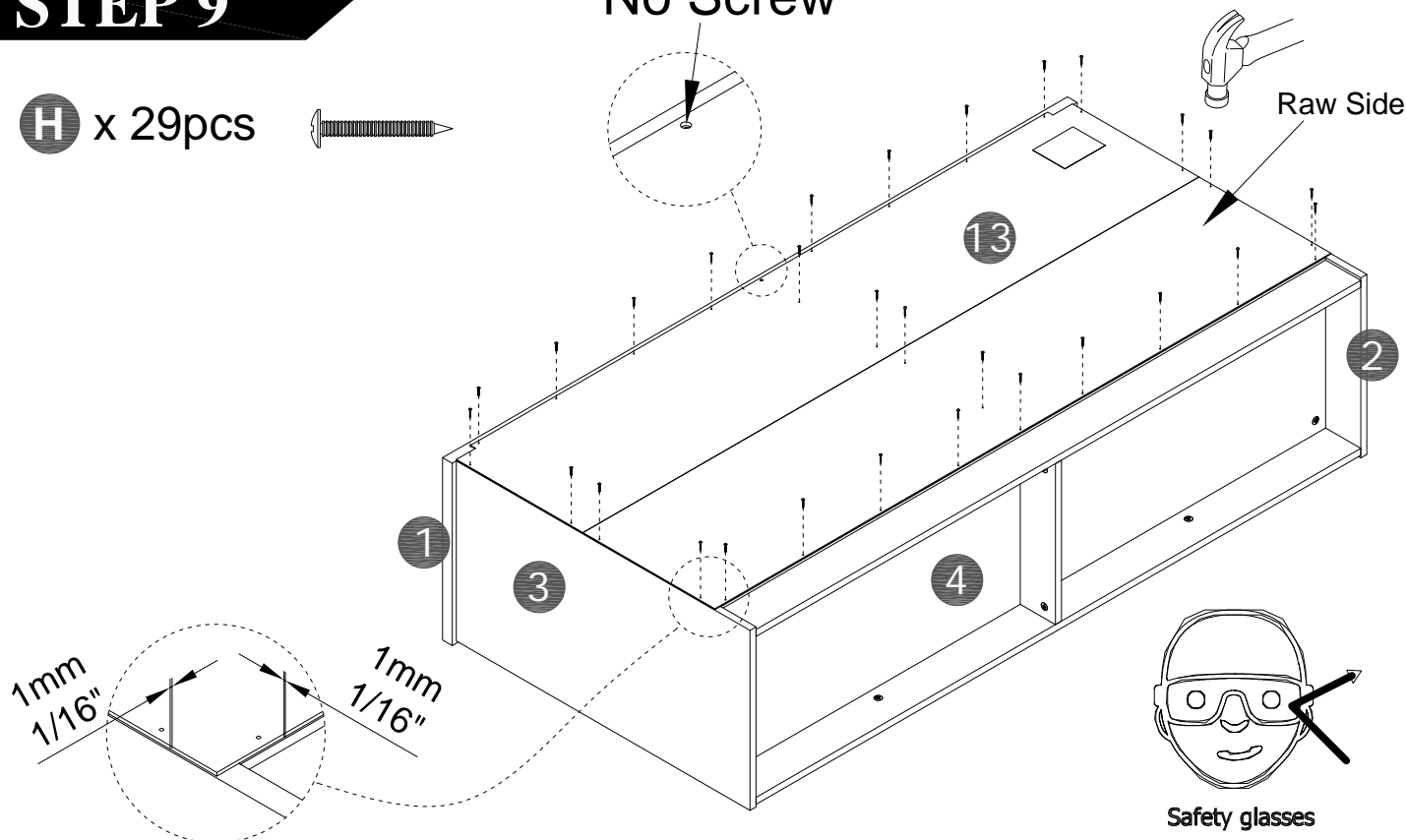
STEP 9

H x 29pcs



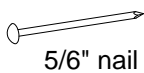
No Screw

Raw Side



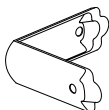
STEP 10

R x 4pcs

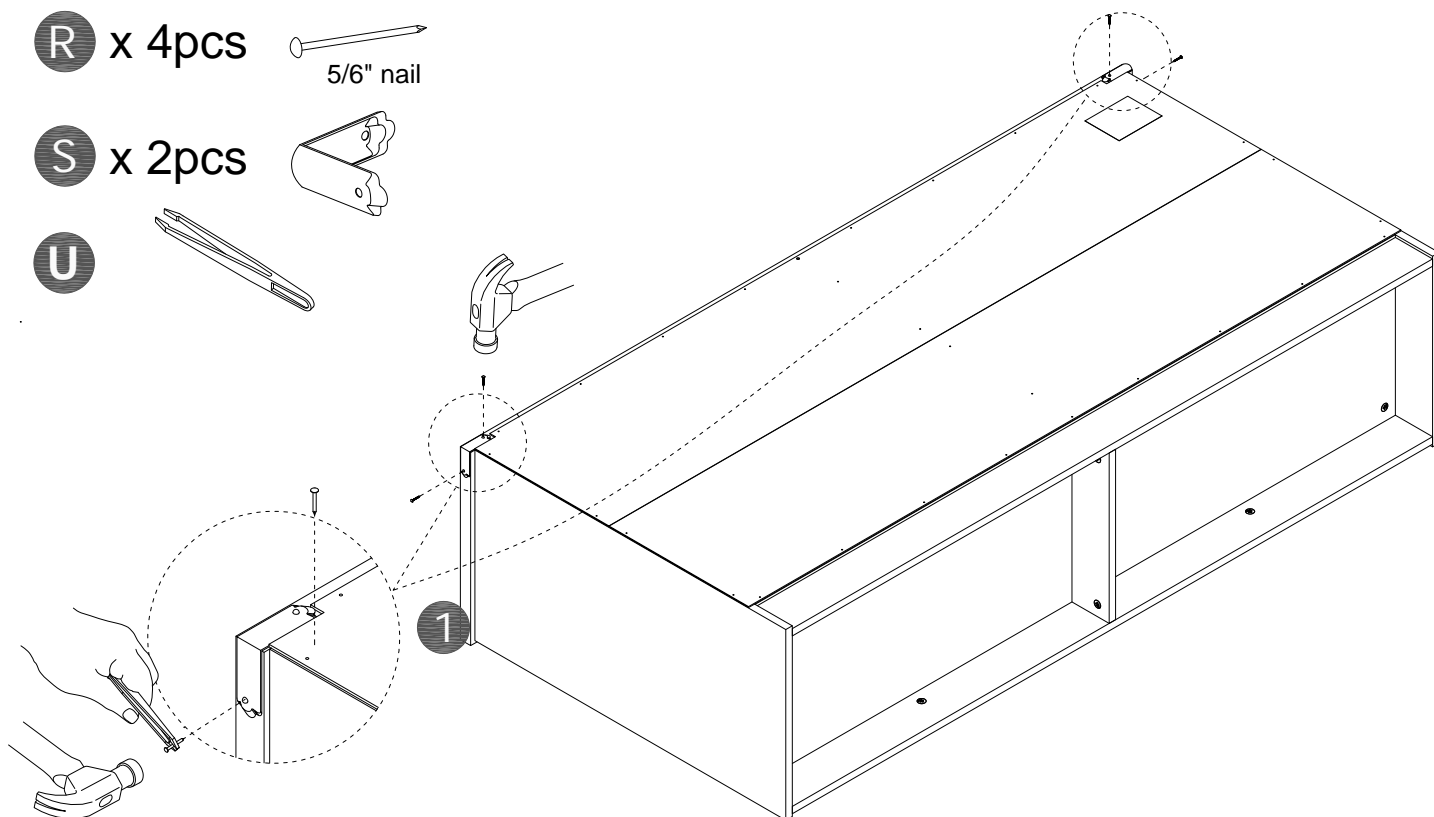
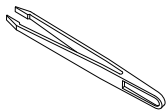


5/6" nail

S x 2pcs



U



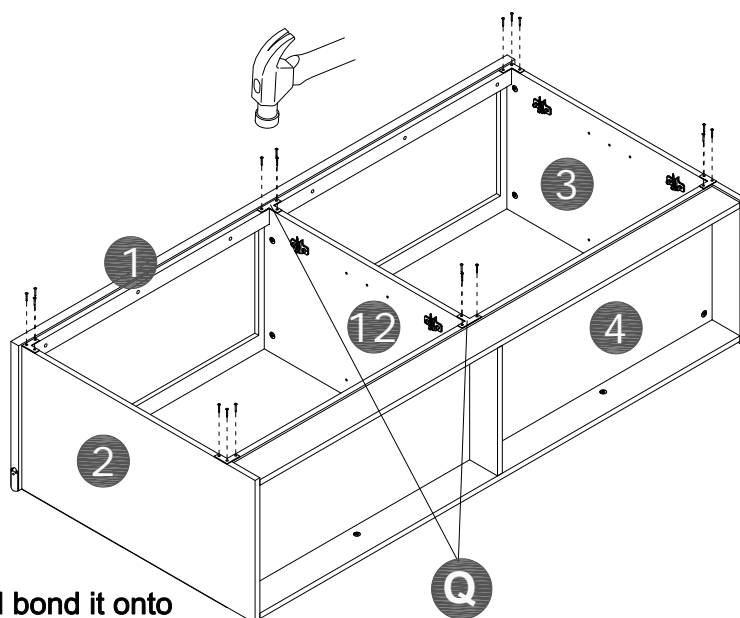
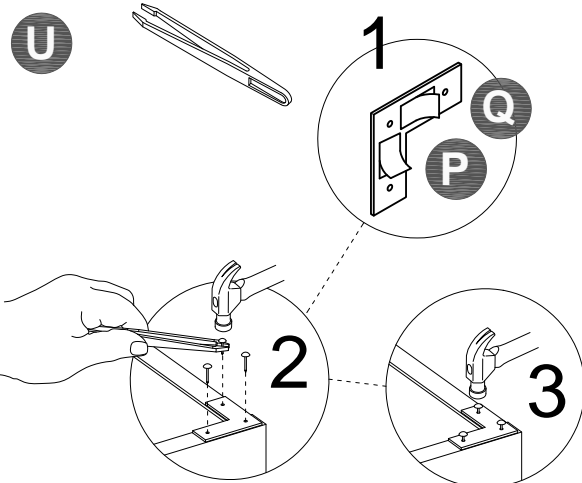
STEP 11

With assistant carefully flip unit over.

O x 18pcs 

Q x 2pcs 

P x 4pcs 

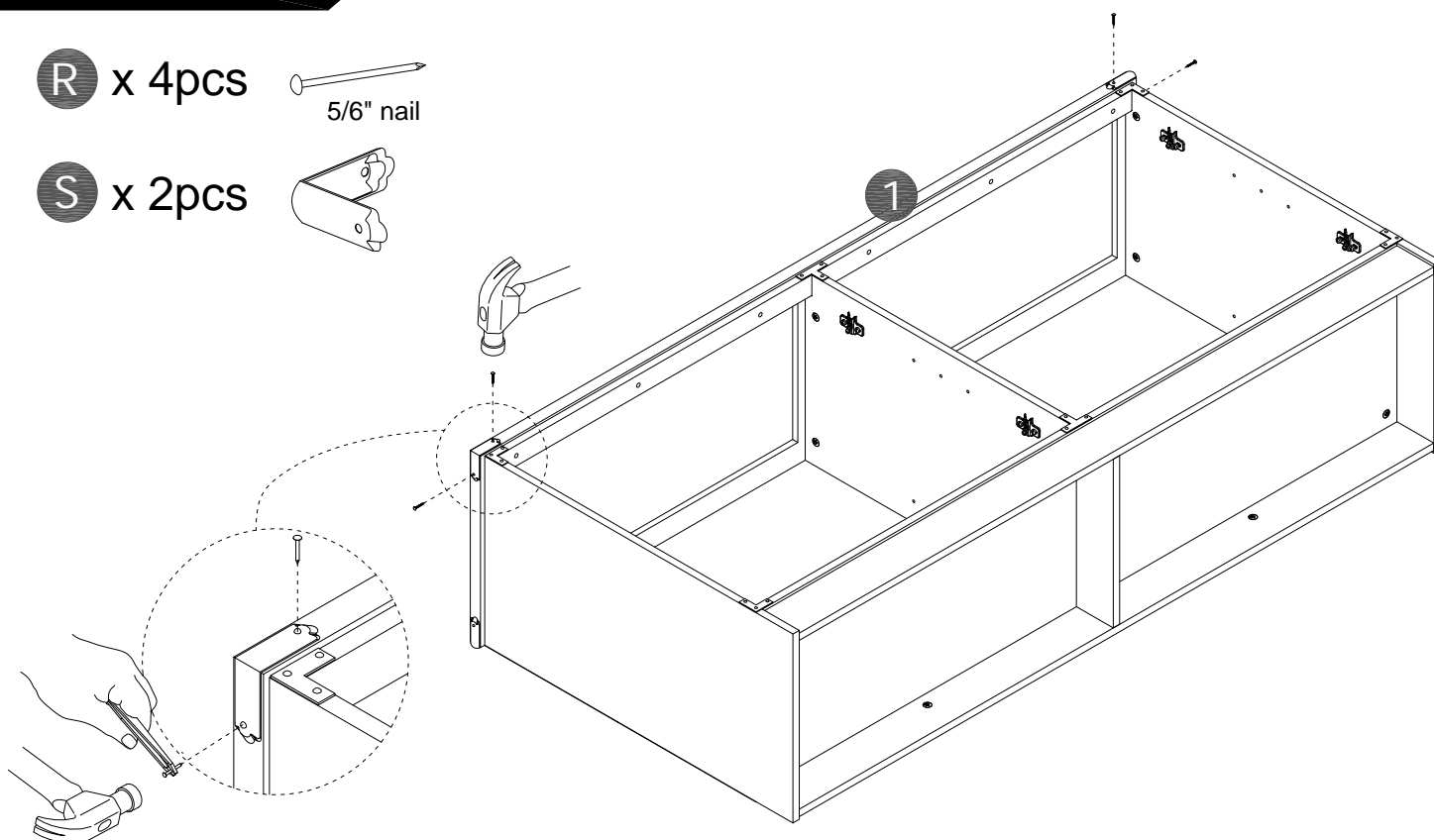


Peel off the adhesive sticker's protective paper and bond it onto the designated position before secure with nails.

STEP 12

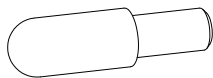
R x 4pcs 
5/6" nail

S x 2pcs 

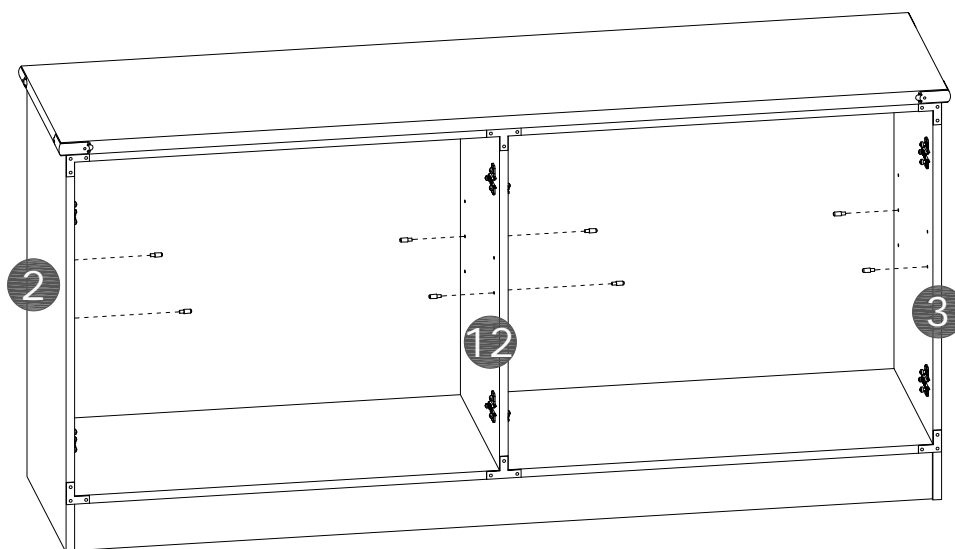


STEP 13

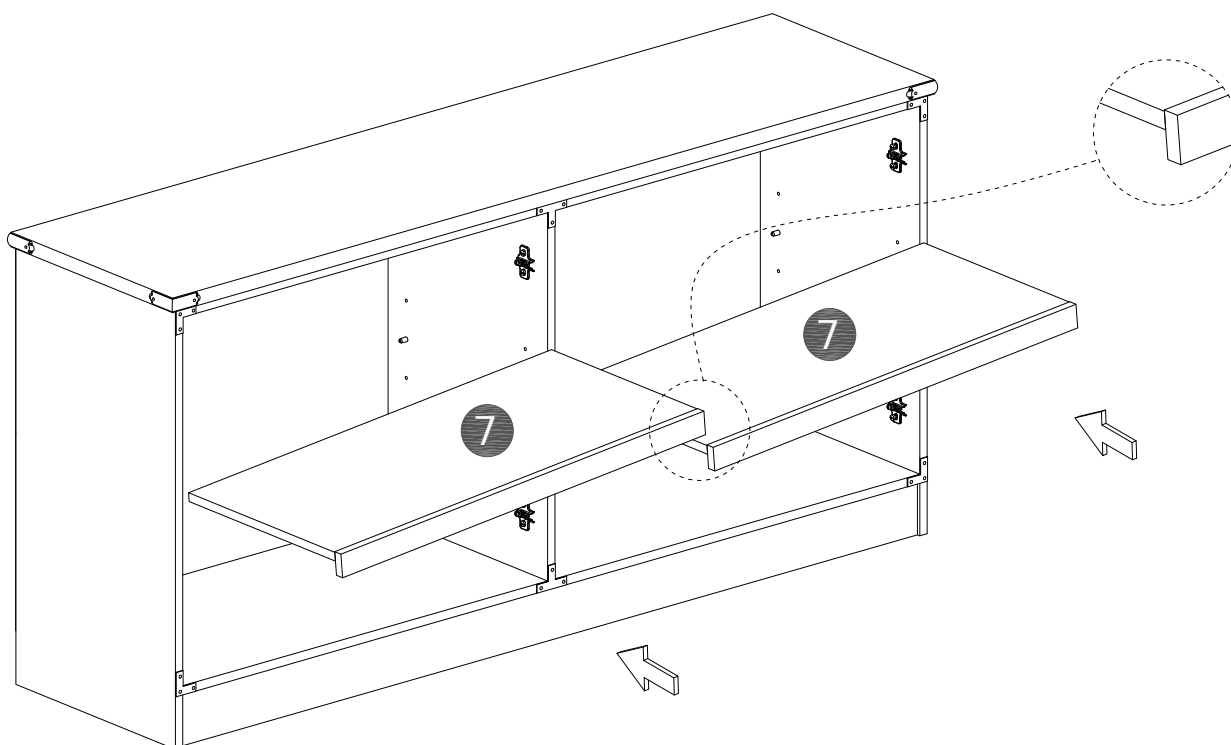
AA x 8pcs



With assistant carefully stand unit up.

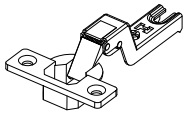


STEP 14

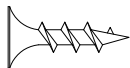


STEP 15

D x 8pcs



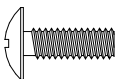
Z x 16pcs



F x 4pcs

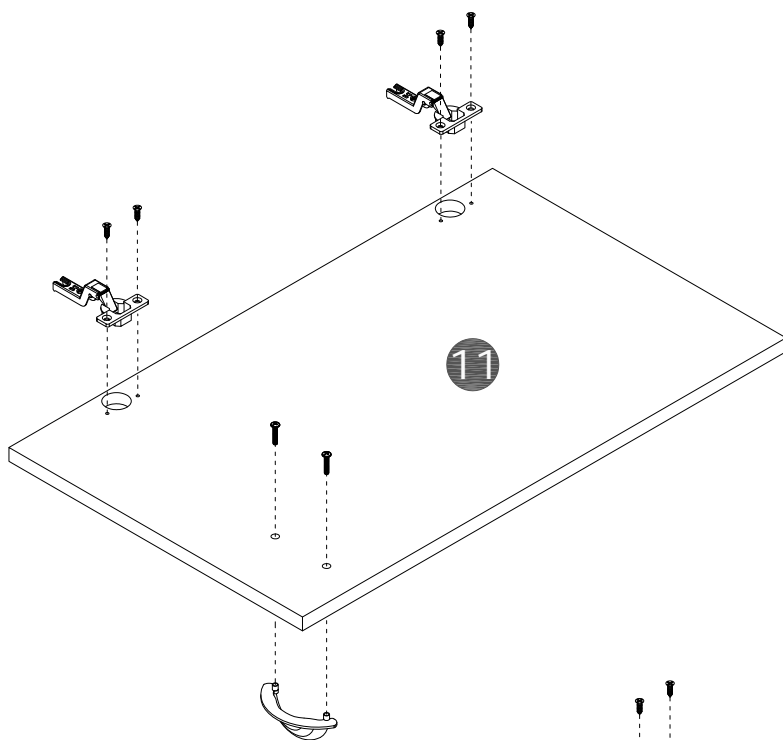


G x 8pcs

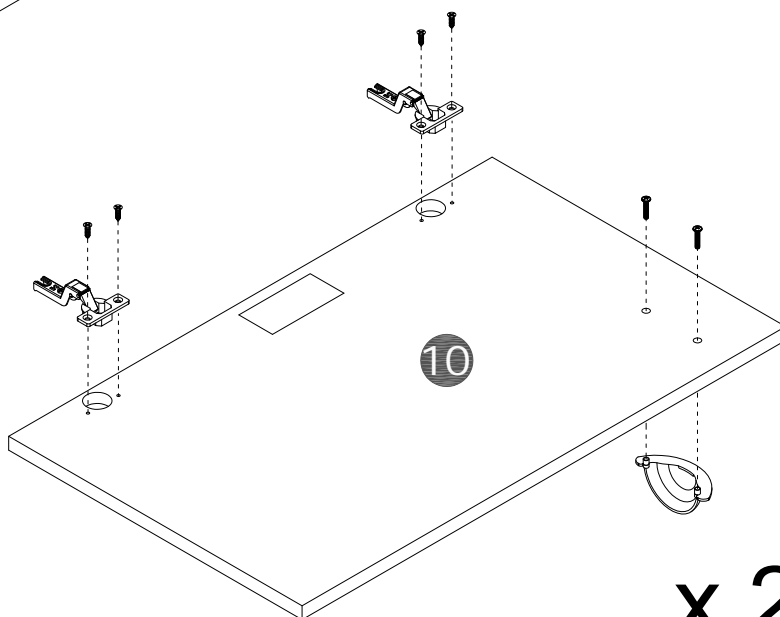


WARNING

Caution, Storing electronic equipment may result in equipment overheating. Shelves located behind doors are not intended for storing electronic equipment. Placing electronic equipment in this area may result in equipment overheating



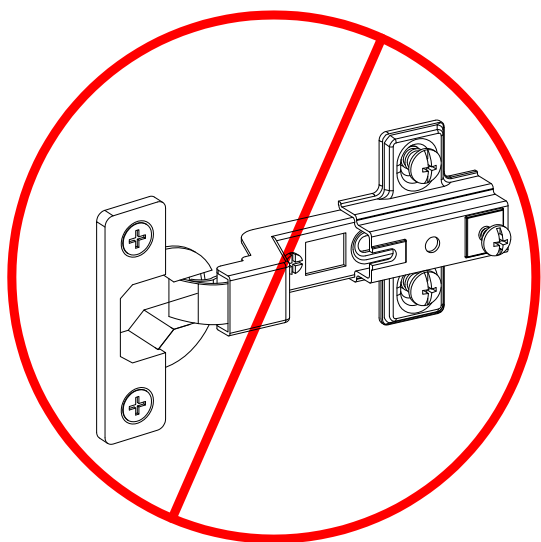
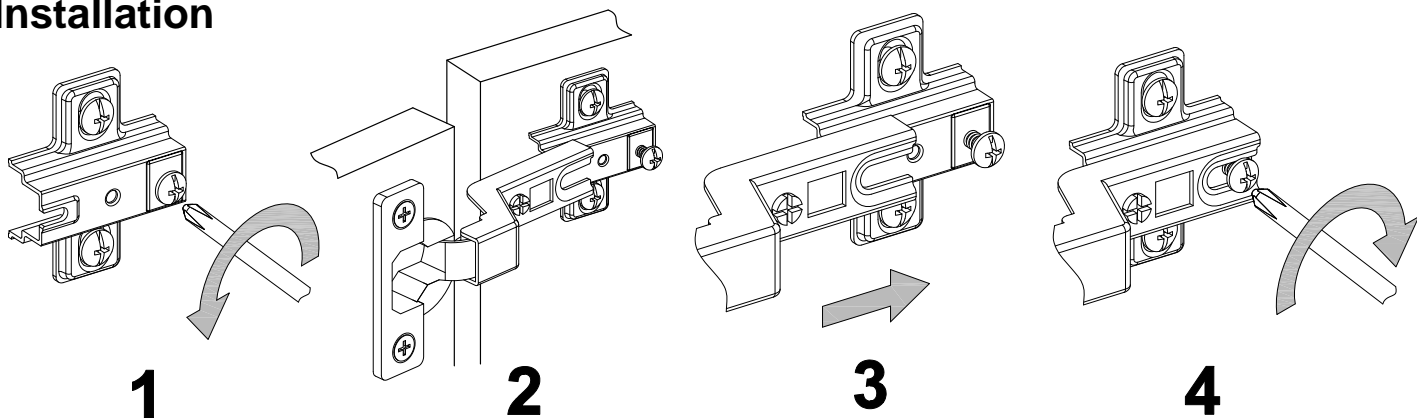
x 2



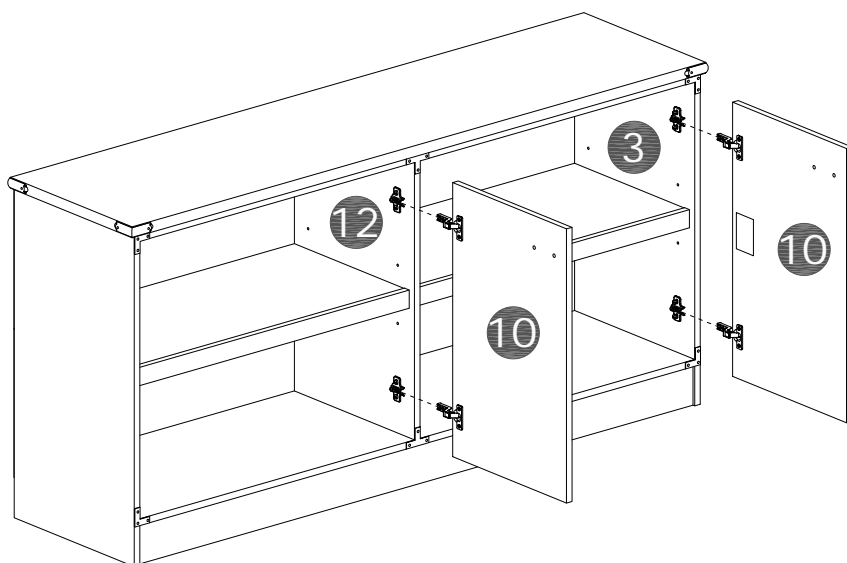
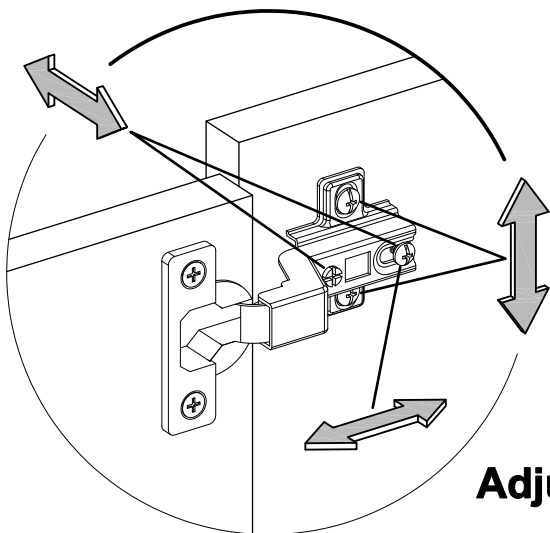
x 2

STEP 16

Installation

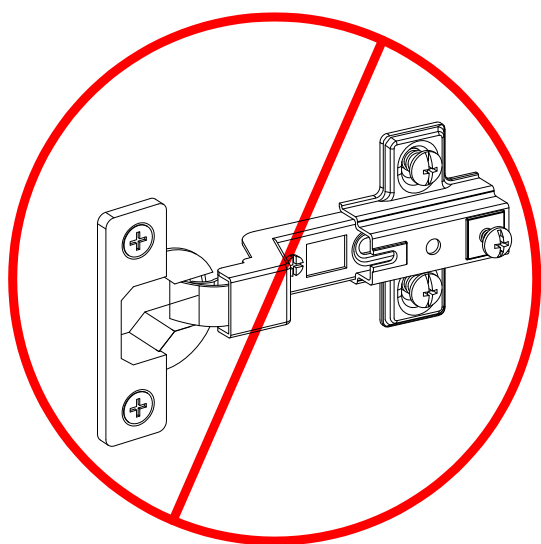
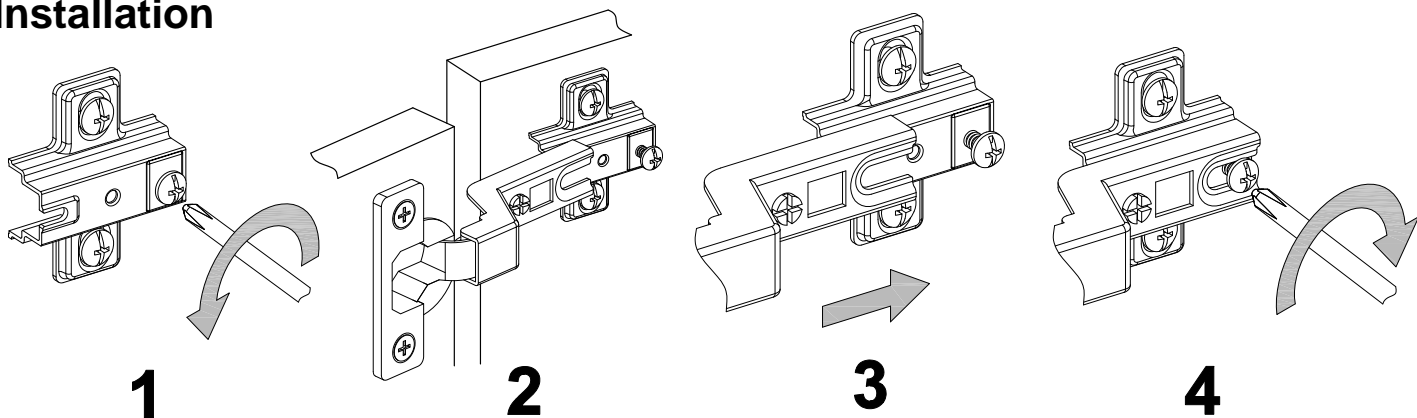


**DO NOT Insert
Hinge beneath mount**

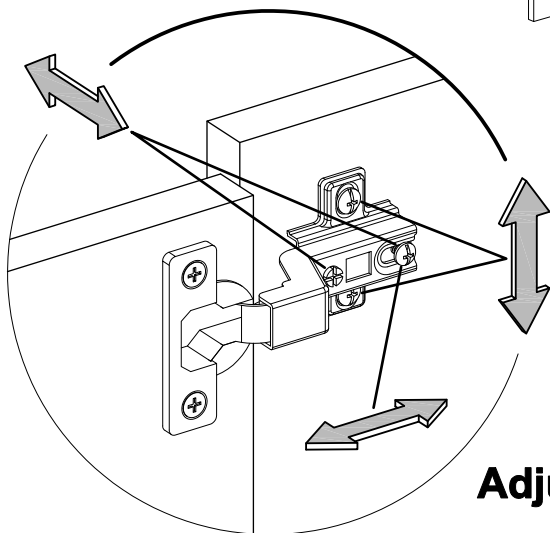


STEP 17

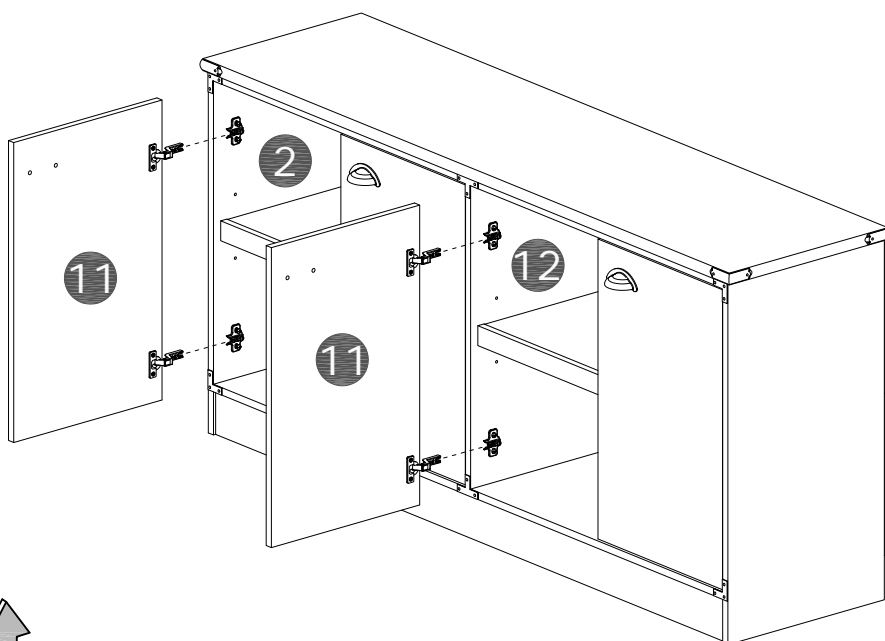
Installation



**DO NOT Insert
Hinge beneath mount**

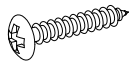


Adjustment

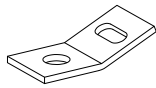


STEP 18

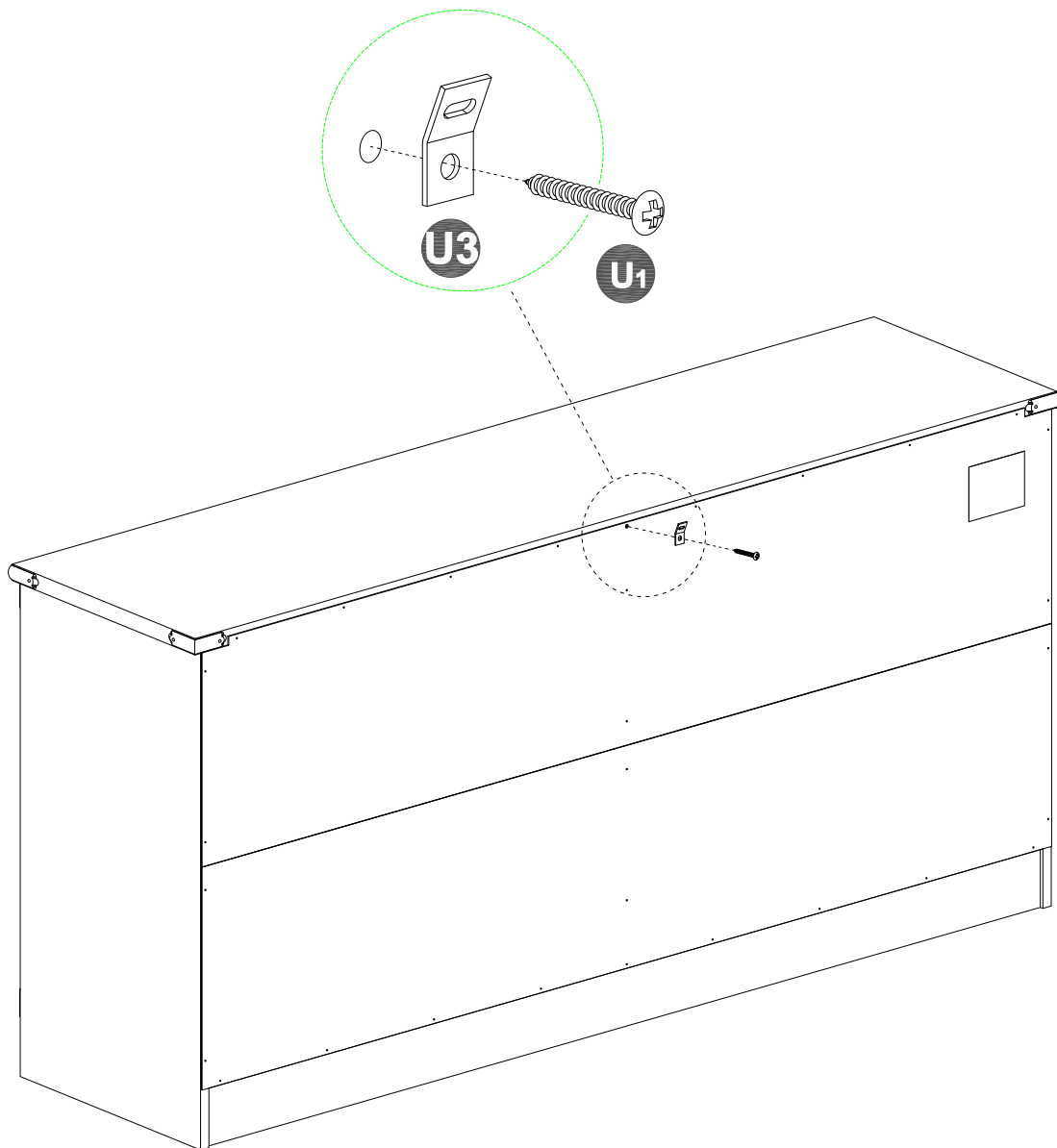
U1 x 1pc



U3 x 1pc



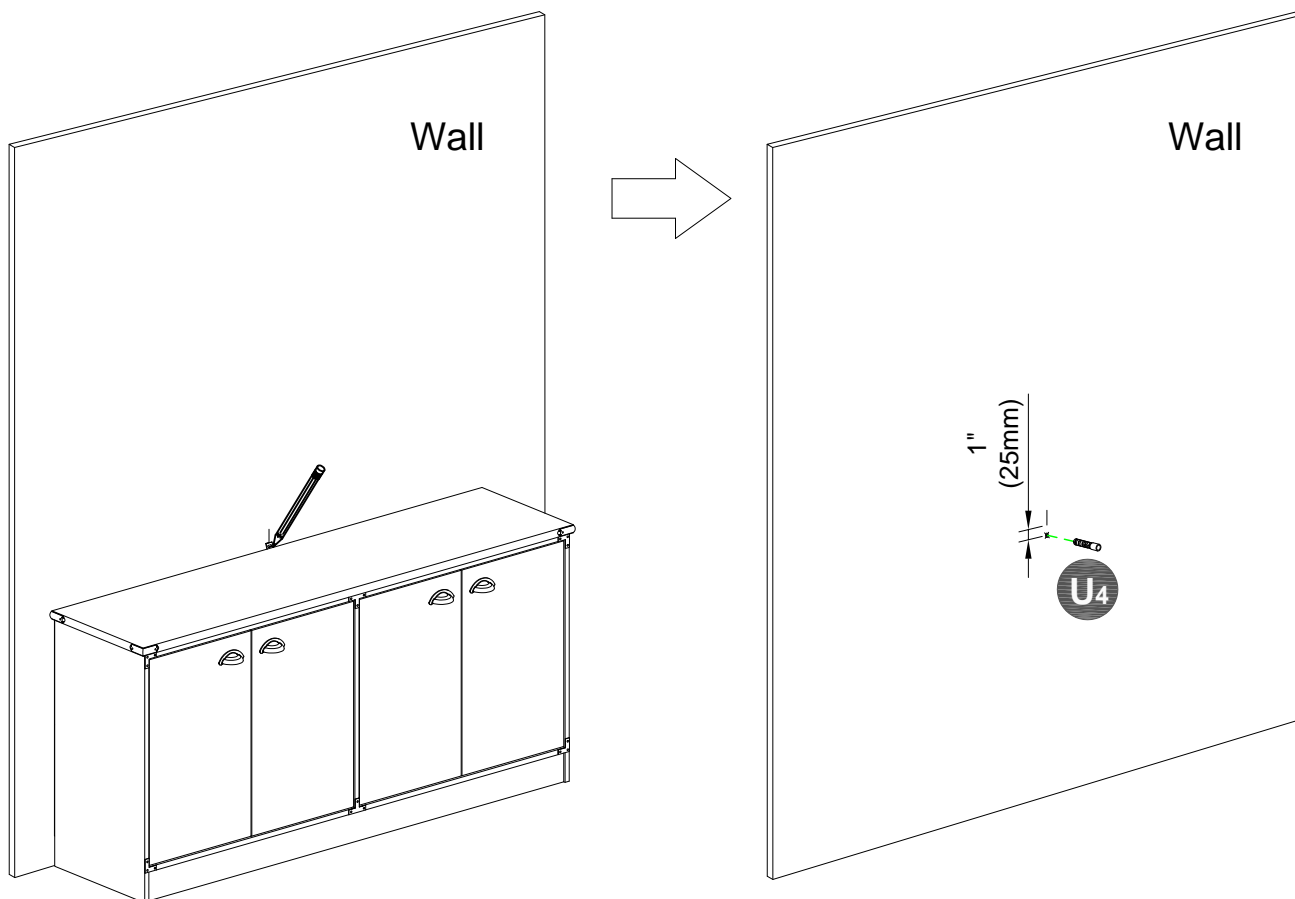
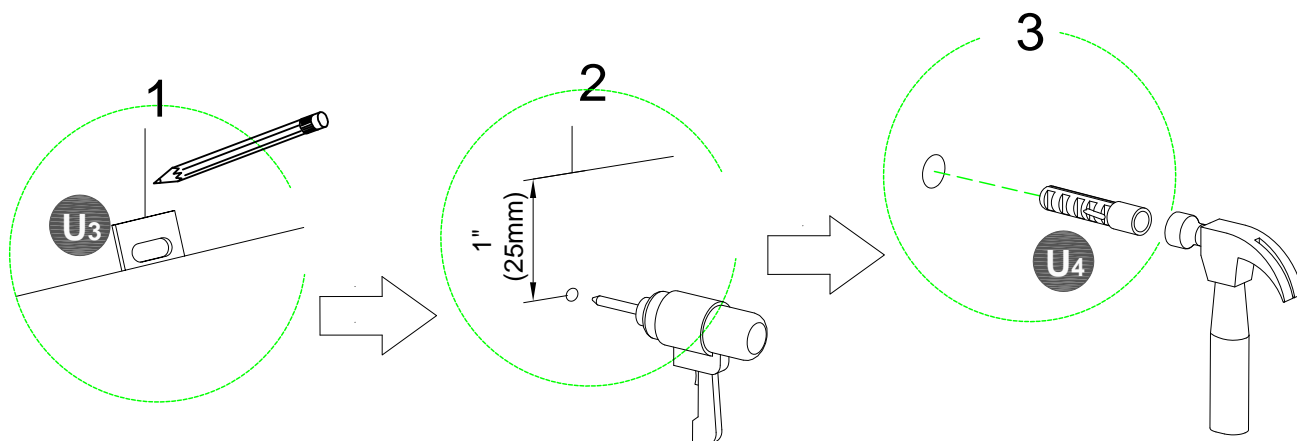
Connecting Plate



STEP 19

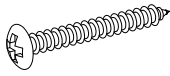
U₄ x 1pc 

1. Place unit in desired location.
2. Mark stud location on the wall, 1" below top and side of unit.
3. Drill 5/16" hole 2" deep at marks on the wall.

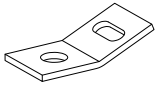


STEP 20

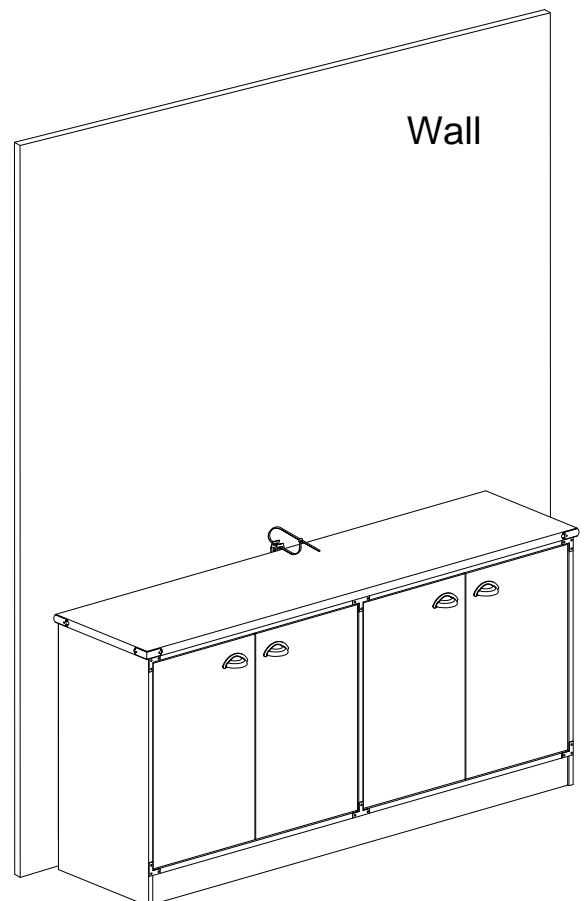
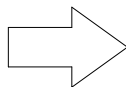
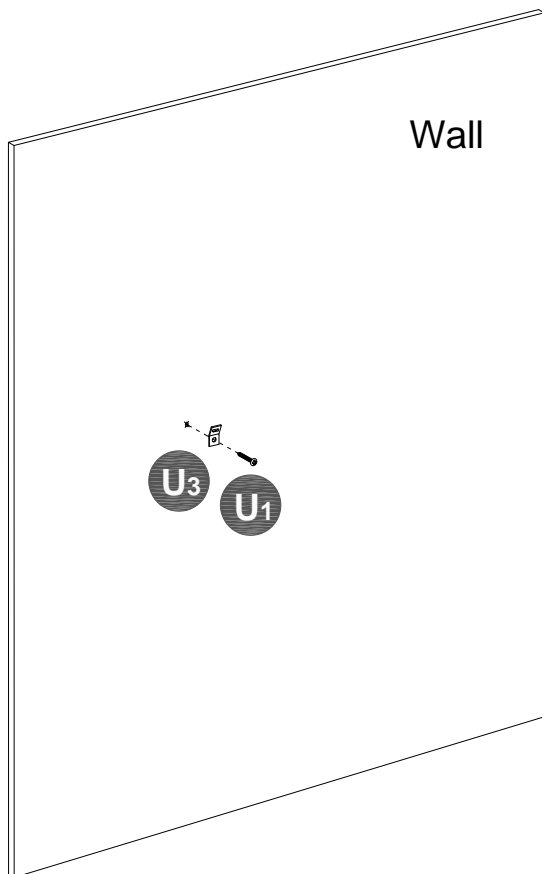
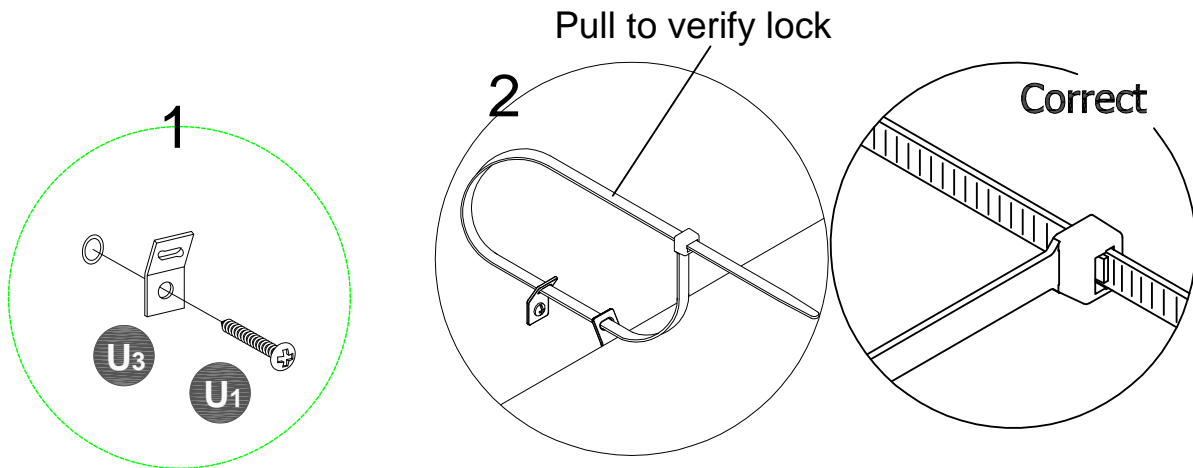
U₁ x 1pc



U₃ x 1pc



U₅ x 1pc



Maximum weight capacities

