

IMPORTANT: Please read this manual carefully before beginning assembly of this product. Keep this manual for future reference.

Safety Information

This furniture is designed for indoor use.

Identify all the parts and hardware. Do not discard of the packaging until you have checked that you have all the parts and hardware required. Hardware package may have spare parts.

WARNING: This item contains small parts which can be swallowed by children and pets. Keep children and pets away during assembly. To avoid danger of suffocation, always keep plastic bags away from children and pets.

We recommend that you assemble this unit on a carpeted floor to avoid scratches. If using power tools, set the tool to low torque to avoid damage.

May require 2 people for ease of assembly.

Care & Maintenance

Wipe regularly with clean water and a damp, clean, soft white cloth.

General cleaning can be done as needed with a mild detergent and water solution.

Always rinse with clean water and dry.

For heavy soiling, dampen a soft white cloth or soft bristle brush.

Use care as scrubbing can damage the surface.

More difficult stains can be treated, but this should be occasional, not daily cleaning.


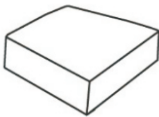

ANY cleaning solution used must be removed with clean water and a clean white cloth. Cleaning residue left on the material can cause it to dry out and crack or affect the color.

DO NOT use any cleaners with corrosive ingredients (lye, acids or ammonia).

Pre-Assembly Information

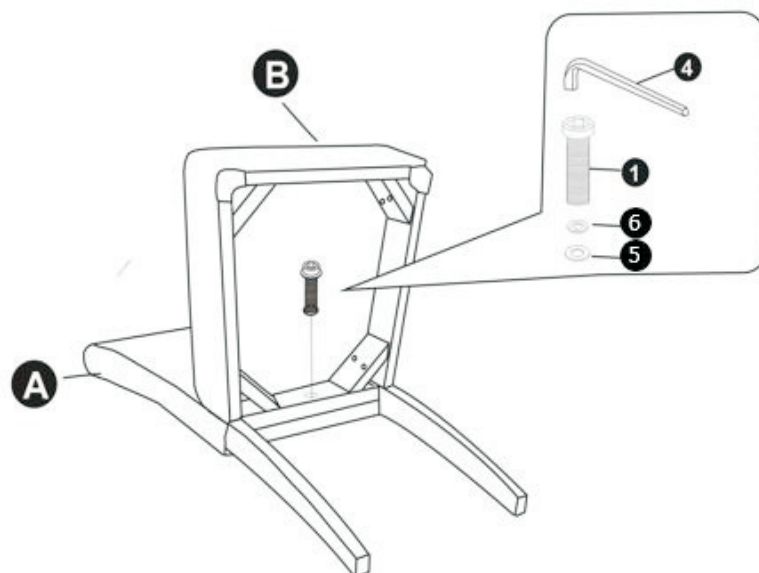
Model # WS5113-4

Part Description

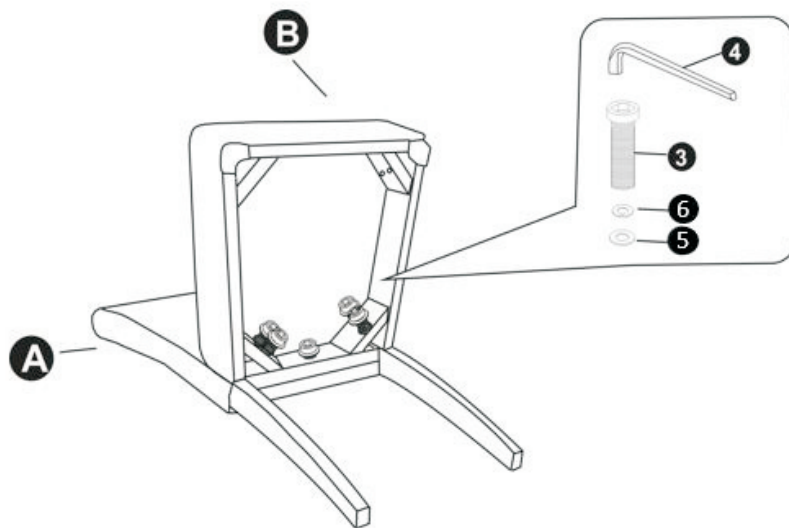
A	B	C
 <p data-bbox="263 902 472 987">CHAIR BACK QTY 1</p>	 <p data-bbox="754 902 839 987">SEAT QTY 1</p>	 <p data-bbox="1139 902 1326 987">FRONT LEG QTY 2</p>

Hardware Description

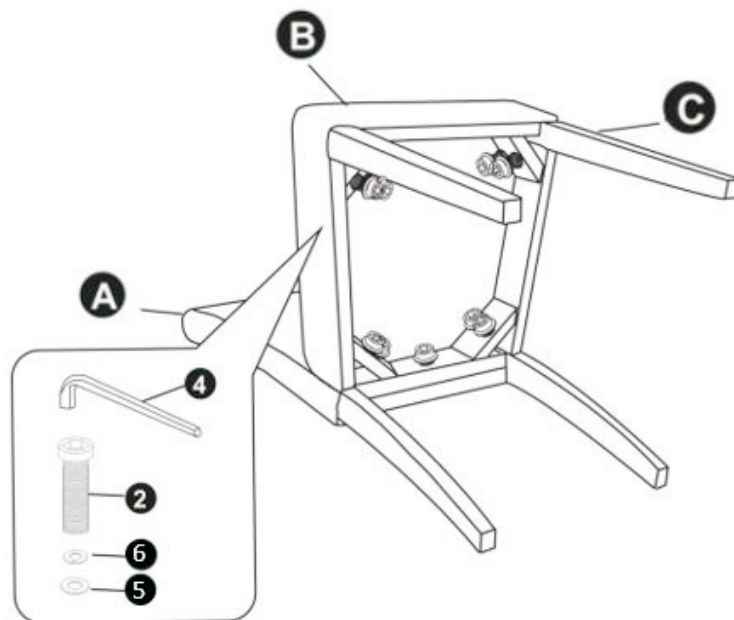
<p data-bbox="145 1167 202 1240">1</p>  <p data-bbox="215 1402 528 1541">ALLEN KEY SCREW M8 x 55 mm QTY 1</p>	<p data-bbox="580 1167 638 1240">2</p>  <p data-bbox="652 1402 965 1541">ALLEN KEY SCREW M8 x 60 mm QTY 4</p>	<p data-bbox="1016 1167 1074 1240">3</p>  <p data-bbox="1082 1402 1394 1541">ALLEN KEY SCREW M8 x 80 mm QTY 4</p>
<p data-bbox="145 1541 202 1615">4</p>  <p data-bbox="280 1792 459 1919">ALLEN KEY 5 mm QTY 1</p>	<p data-bbox="580 1541 638 1615">5</p>  <p data-bbox="738 1792 887 1919">WASHER Ø 22 mm QTY 9</p>	<p data-bbox="1016 1541 1074 1615">6</p>  <p data-bbox="1117 1792 1362 1919">LOCK WASHER Ø 13 mm QTY 9</p>

Step 1

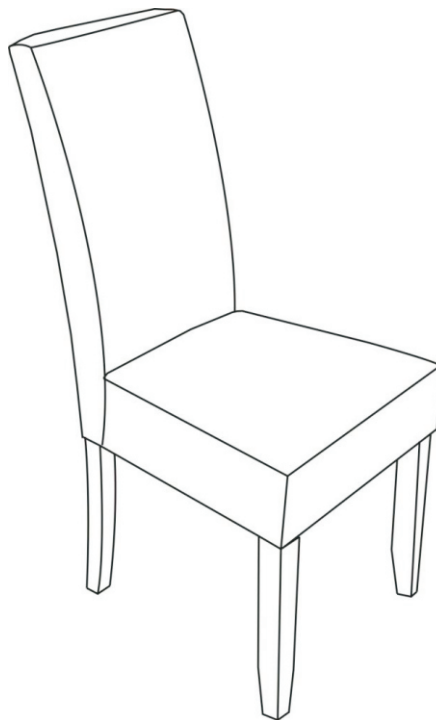
1. Attach Seat (B) to Chair Back (A) using Allen Key Screws (1), one Washer (5) and one Lock Washer (6).
2. Use Allen Key (4) to tighten. Do not over-tighten.

Step 2

1. Secure Seat (B) to Chair Back (A) using Allen Key Screws (3), four Washers (5) and four Lock Washers (6).
2. Use Allen Key (4) to tighten. Do not over-tighten.

Step 3

1. Attach Front Legs (C) to Seat (B) using Allen Key Screws (2), four Washers (5) and four Lock Washers (6).
2. Use Allen Key (4) to tighten. Do not over-tighten.

Step 4

1. Place Chair on a flat, level surface to ensure it is level.
2. If it is uneven, adjust either the Seat (B) or Front Legs (C) and then fully tighten Screws.