




ASSEMBLY INSTRUCTIONS

MODEL :
C63770-OC2/C81080-OC2
COFFEE TABLE WITH 2
DRAWER

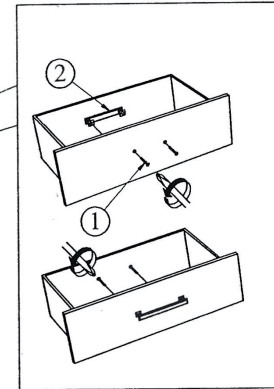
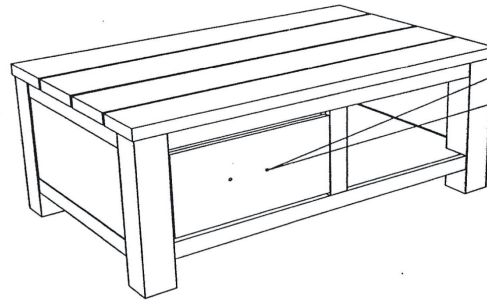
PART LIST

NO	ITEM	QTY
	COFFEE TABLE	
A		1 PC

HARDWARE LIST

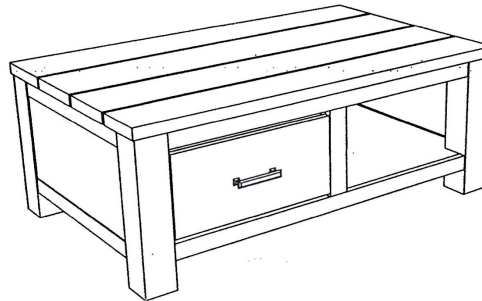
NO	ITEM	QTY
1	Truss Head Machine Screw m4x38mm Blk 	4 PCS
2	HANDLE L150mmxW21.5mmxH20mm 	2 PCS

STEP 1 : Remove HANDLE (2) using a Philips head screw driver as shown in illustration STEP - A. Re-install the HANDLE (2) as per diagram STEP -B. Repeat STEP - A STEP - B until HANDLE (2) are attached correctly.



STEP - A

STEP - B



COMPLETED ASSEMBLY

NOTE : MUST TIGHTEN SCREWS PERIODICALLY WITH USE SCREW WILL BECOME LOOSE CHECK TIGHTNESS OF ALL SCREW EVERY 6-8 WEEKS.