

# TV stand

## Assembly Instruction



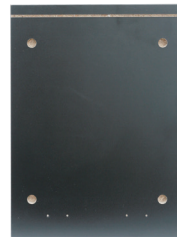
THIS INSTRUCTION BOOKLET CONTAINS IMPORTANT SAFETY INFORMATION.  
PLEASE READ AND KEEP FOR FUTURE REFERENCE.



①  
1PC(1600x400)



②  
1PC(1600x382)



③  
1PC(280x382)



④  
1PC(280x382)



⑤  
1PC(280x382)



⑥  
1PC(280x382)



⑦  
1PC(362x514)



⑧  
1PC(291x540)



⑨  
1PC(291x540)



⑩  
3PC(290x523)

# Parts List and Diagram



Ⓐ  
20pcs



Ⓑ  
20pcs



Ⓒ  
20pcs



Ⓓ  
4pcs



Ⓔ  
44pcs



Ⓕ  
2pcs



Ⓖ  
4pcs



Ⓖ  
5pcs

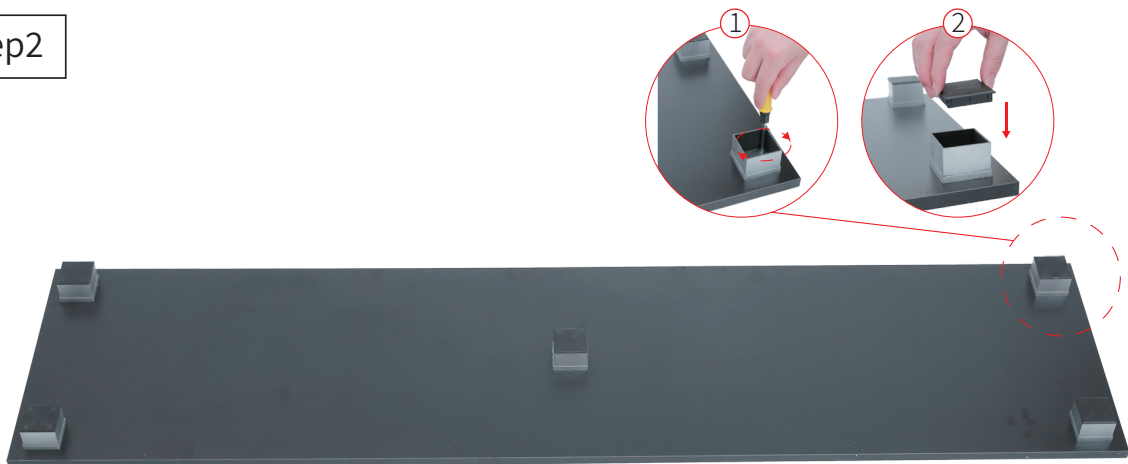


Scan QR code for assembly video

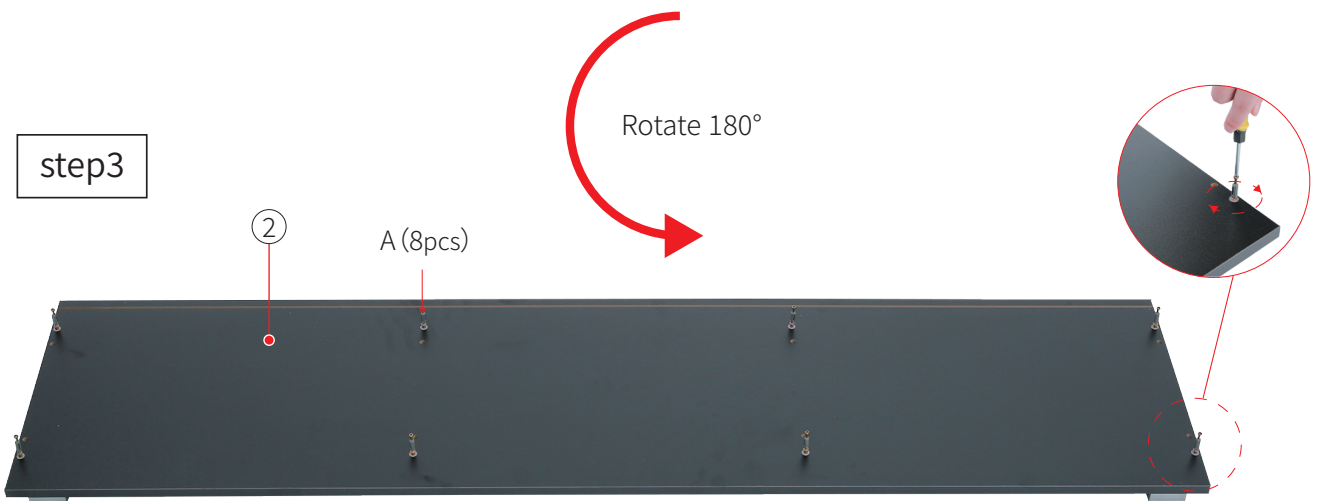
step1



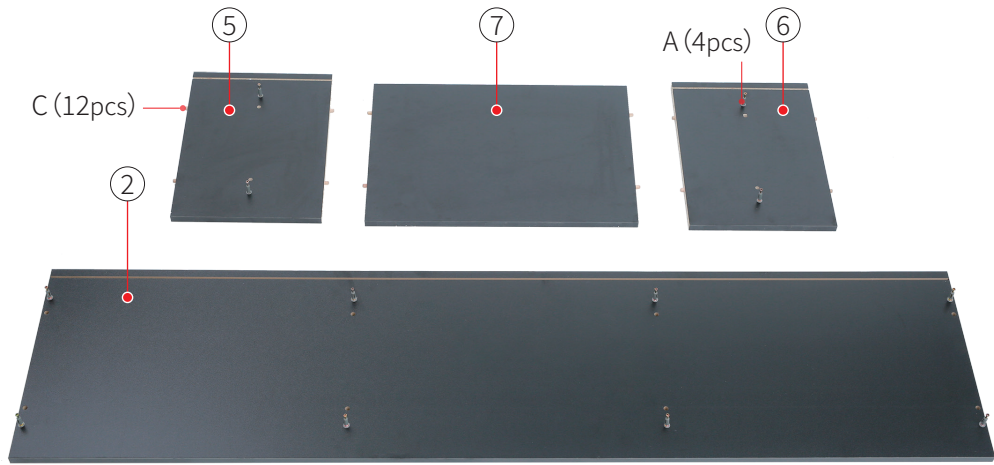
step2



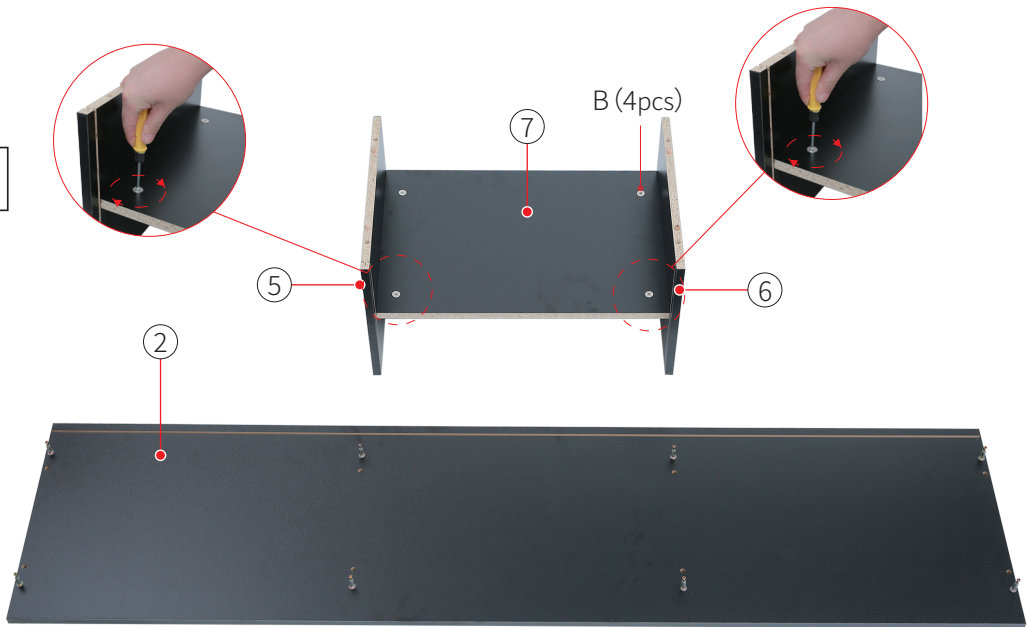
step3



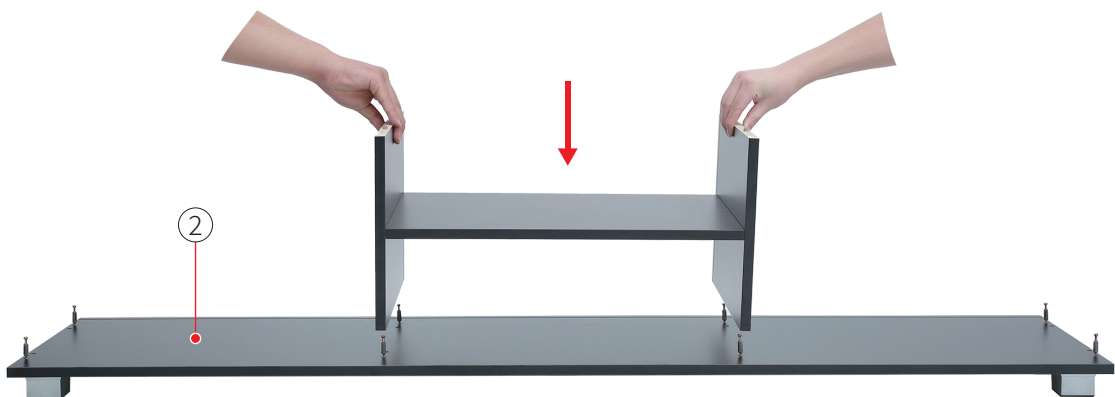
step4



step5

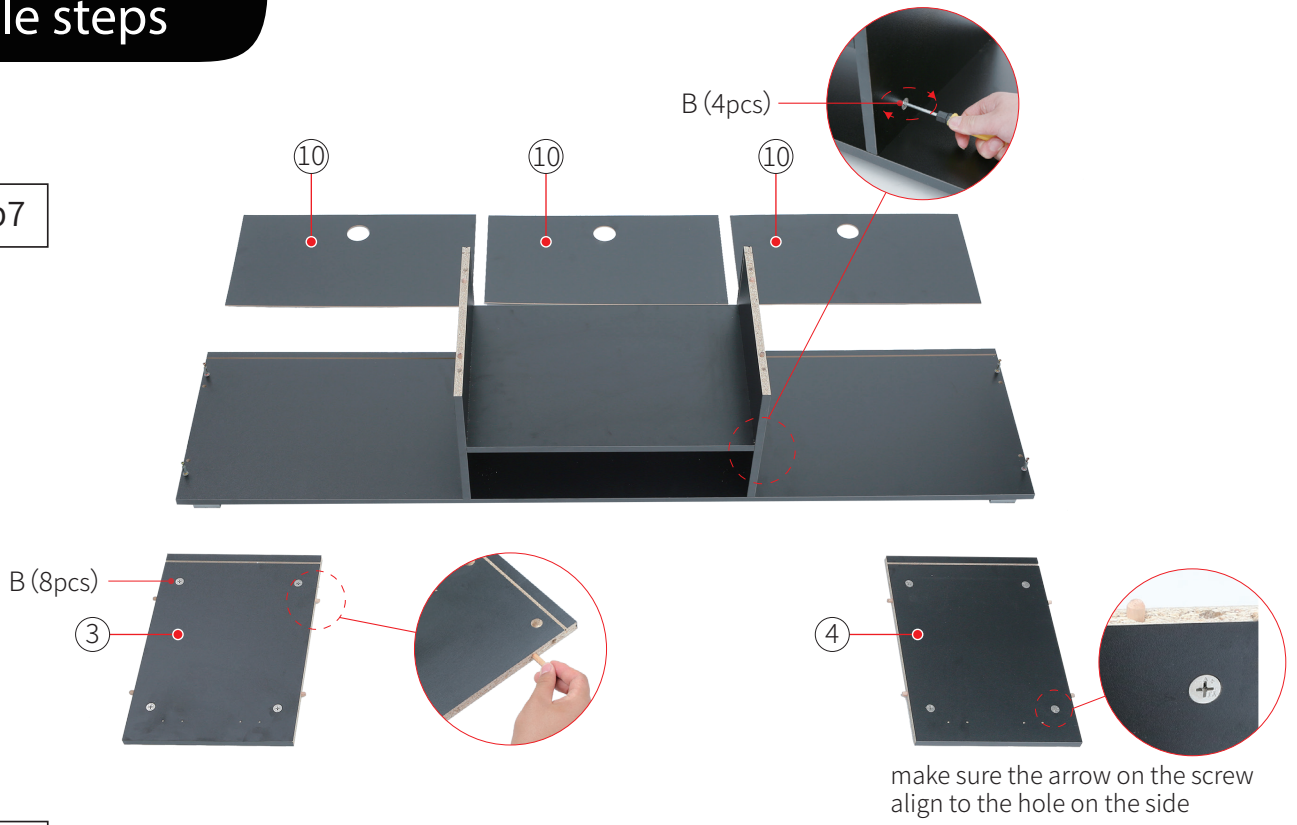


step6



# Assemble steps

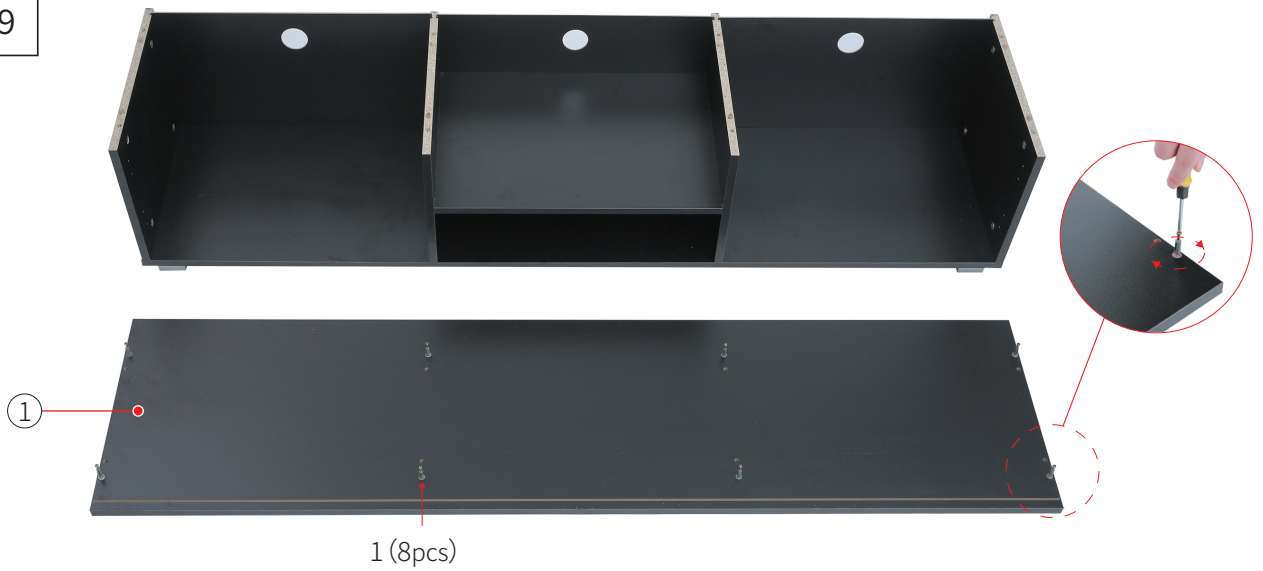
step7



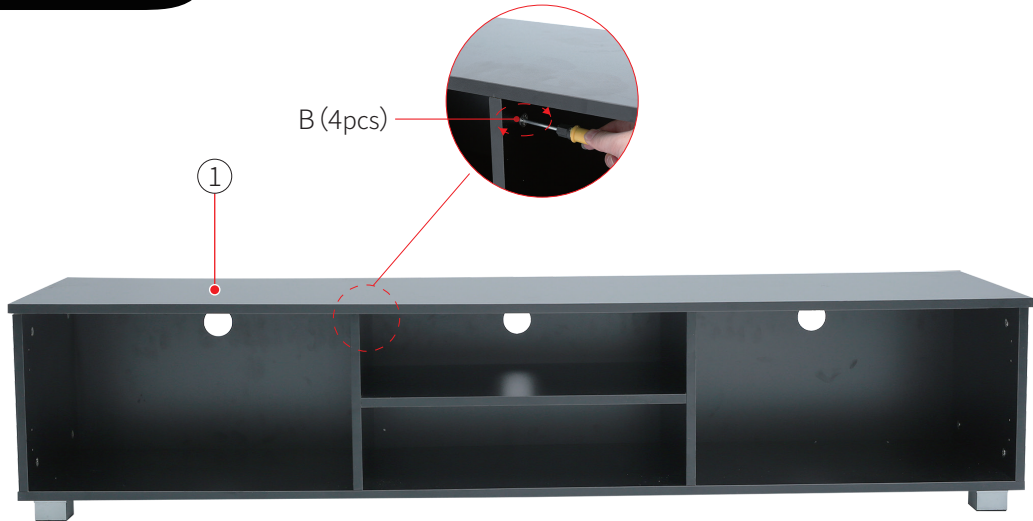
step8



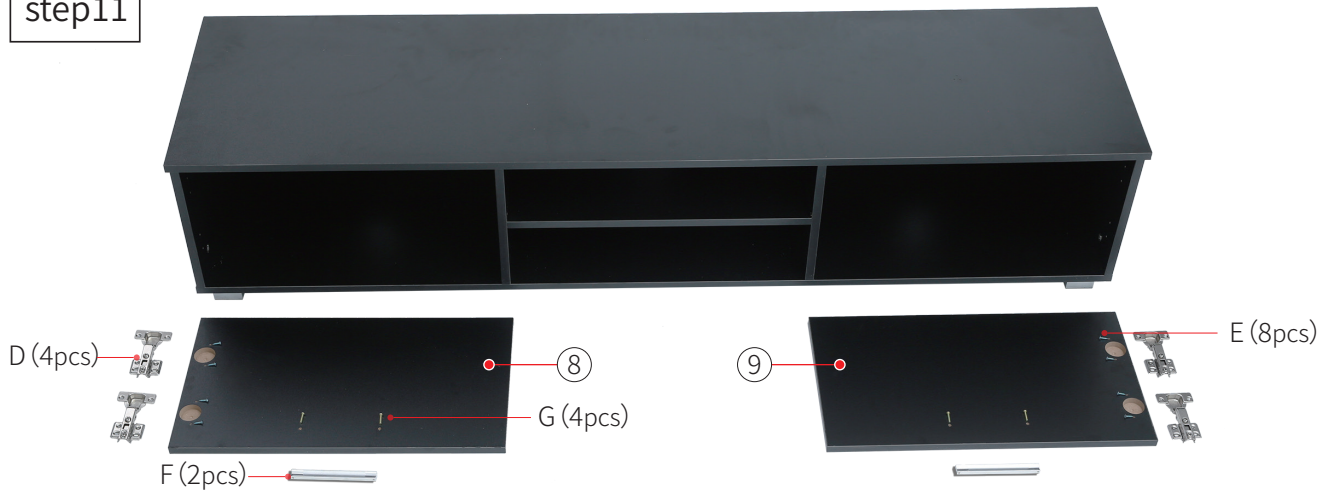
step9



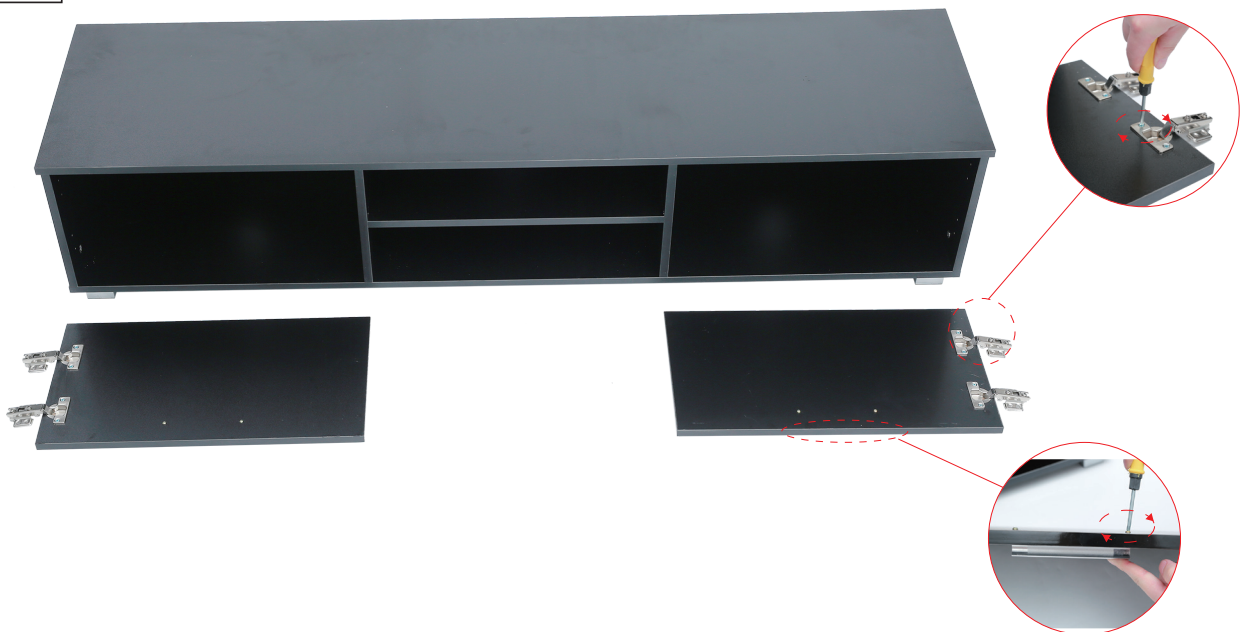
step10



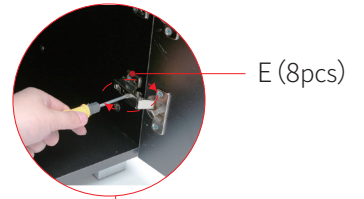
step11



step12



step13



E (8pcs)

step14

