

# LED TV stand

## Assembly Instruction



THIS INSTRUCTION BOOKLET CONTAINS IMPORTANT SAFETY INFORMATION.  
PLEASE READ AND KEEP FOR FUTURE REFERENCE.



①  
1PC(334x1300)



②  
1PC(334x700)



③  
1PC(334x700)



④  
1PC(334x434)



⑤  
1PC(334x434)



⑥  
1PC(220x334)



⑦  
1PC(220x334)



⑧  
2PC(164x334)



⑨  
1PC(248x698)



⑩  
1PC(120x300)



⑪  
1PC(120x300)



⑫  
1PC(120x612)



⑬

1PC(60x284)



⑭

1PC(80x370)



⑮

1PC(80x370)



⑯

1PC(80x1300)



⑰

1PC(294x622)



⑱

1PC(230x678)



⑲

2PC(282x330)



Ⓐ

32pcs



Ⓑ

32pcs



Ⓒ

29pcs



Ⓓ

1pcs



Ⓔ

1pcs



Ⓕ

1pcs

# Parts List and Diagram



ⓐ  
1pcs



ⓓ  
4pcs



ⓔ  
8pcs



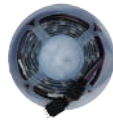
ⓑ  
16pcs



ⓓ  
8pcs



ⓕ  
4pcs



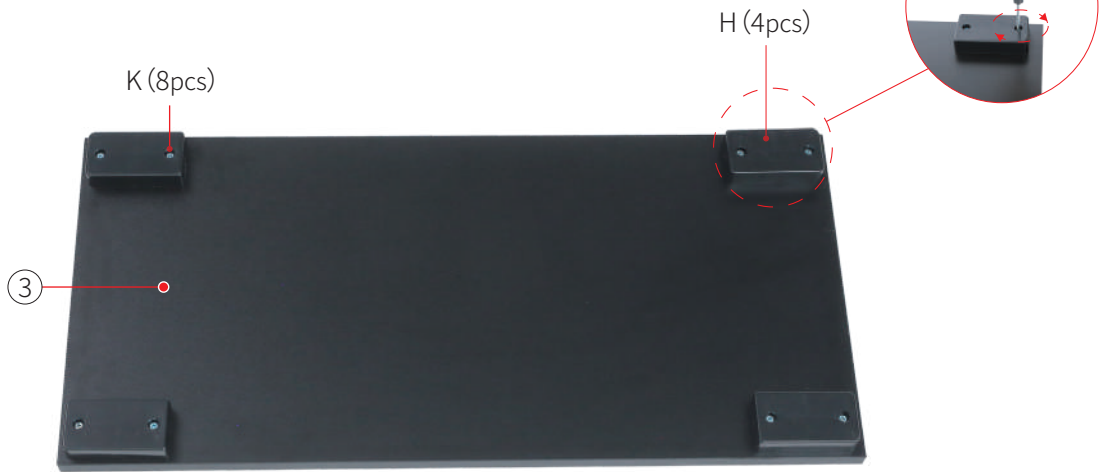
LED  
1pcs



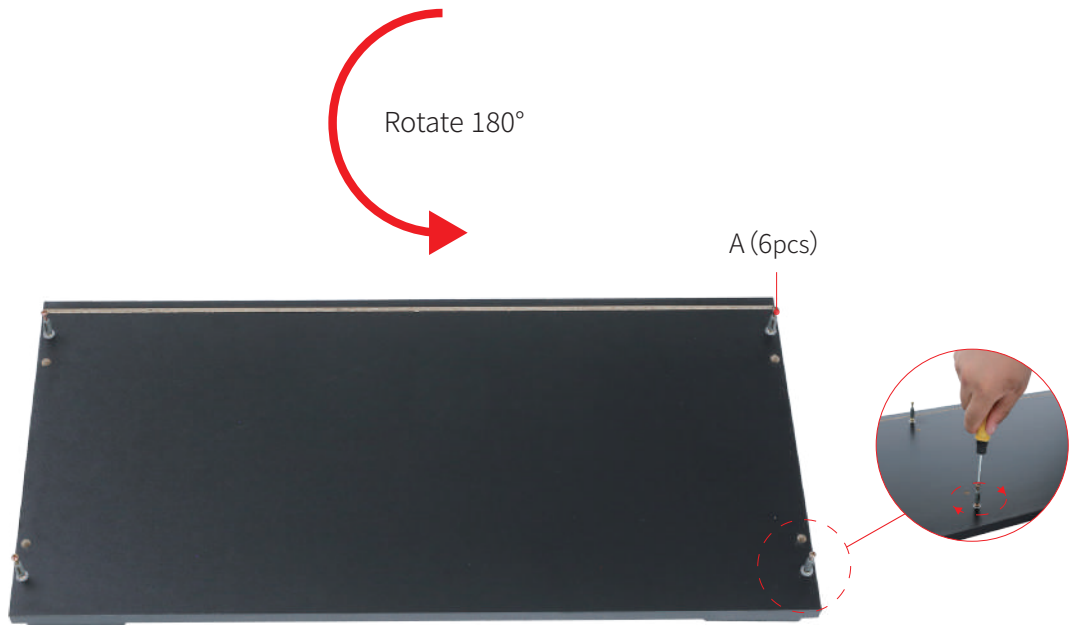
Scan QR code for assembly video

# Assemble steps

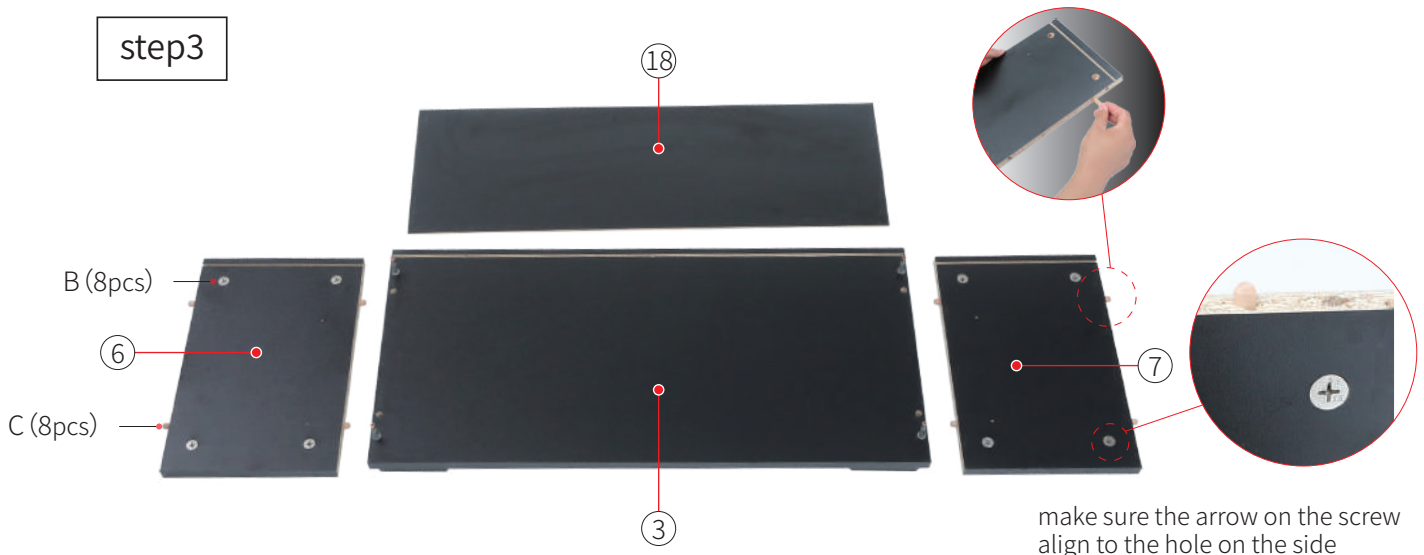
step1



step2



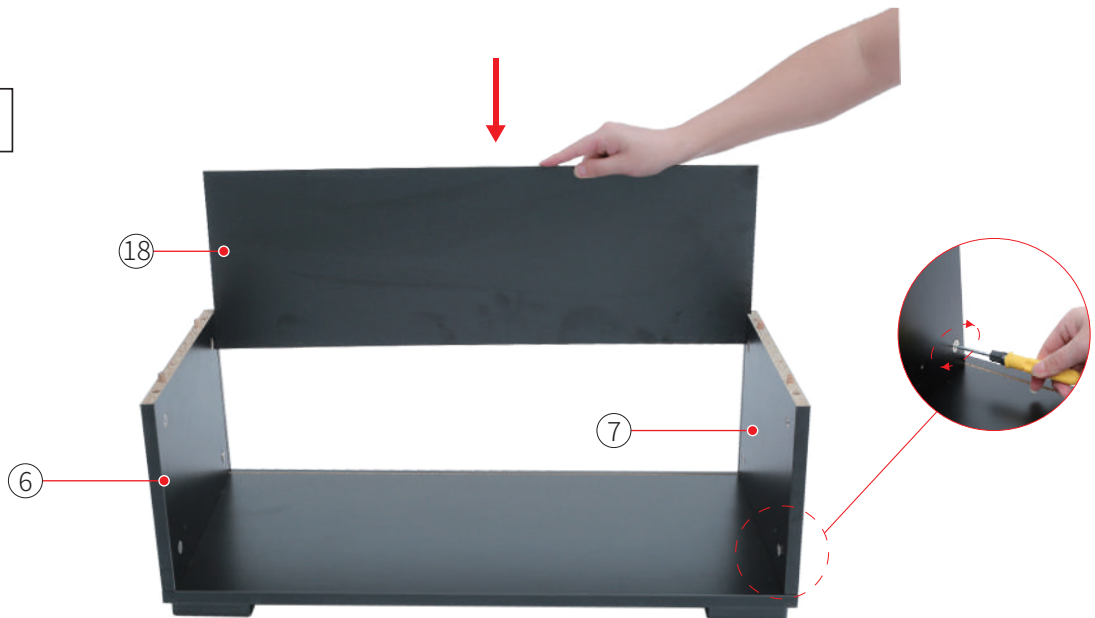
step3



step4



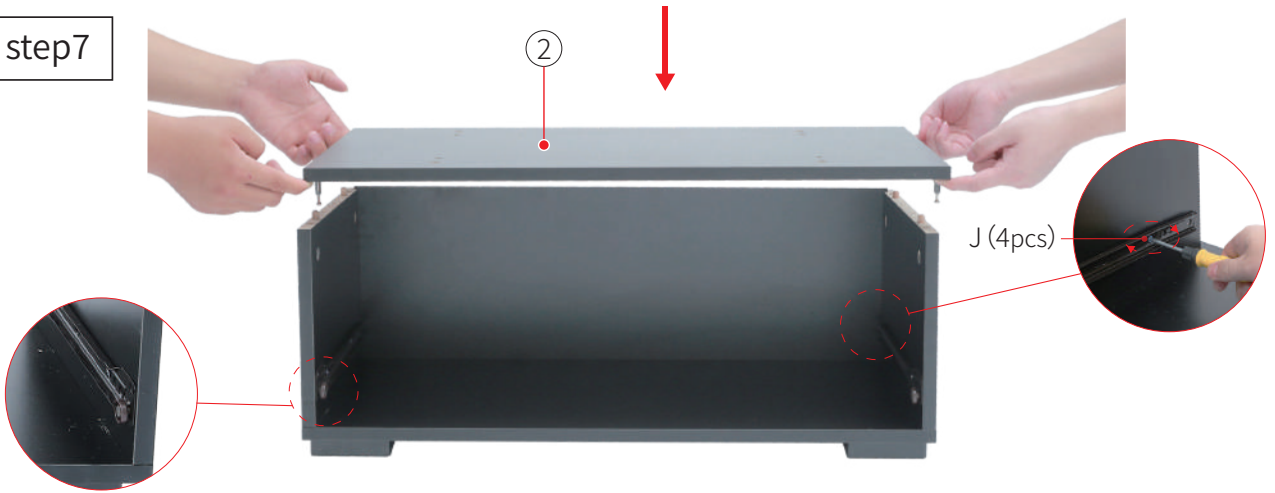
step5



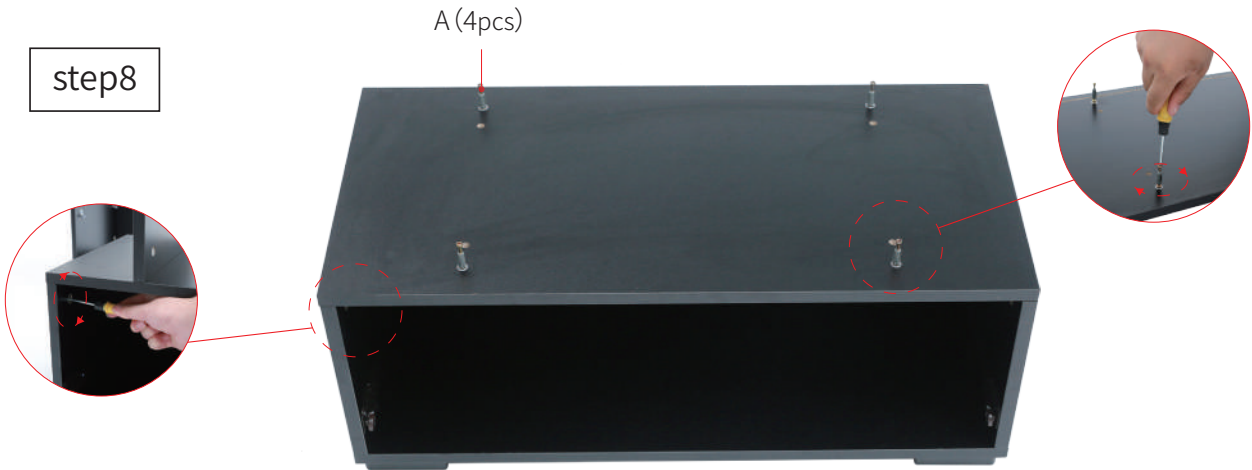
step6



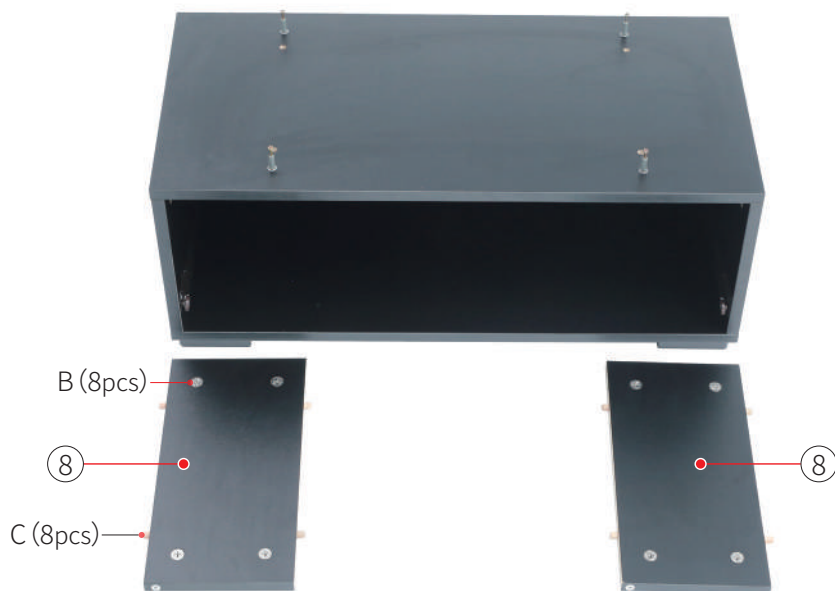
step7



step8

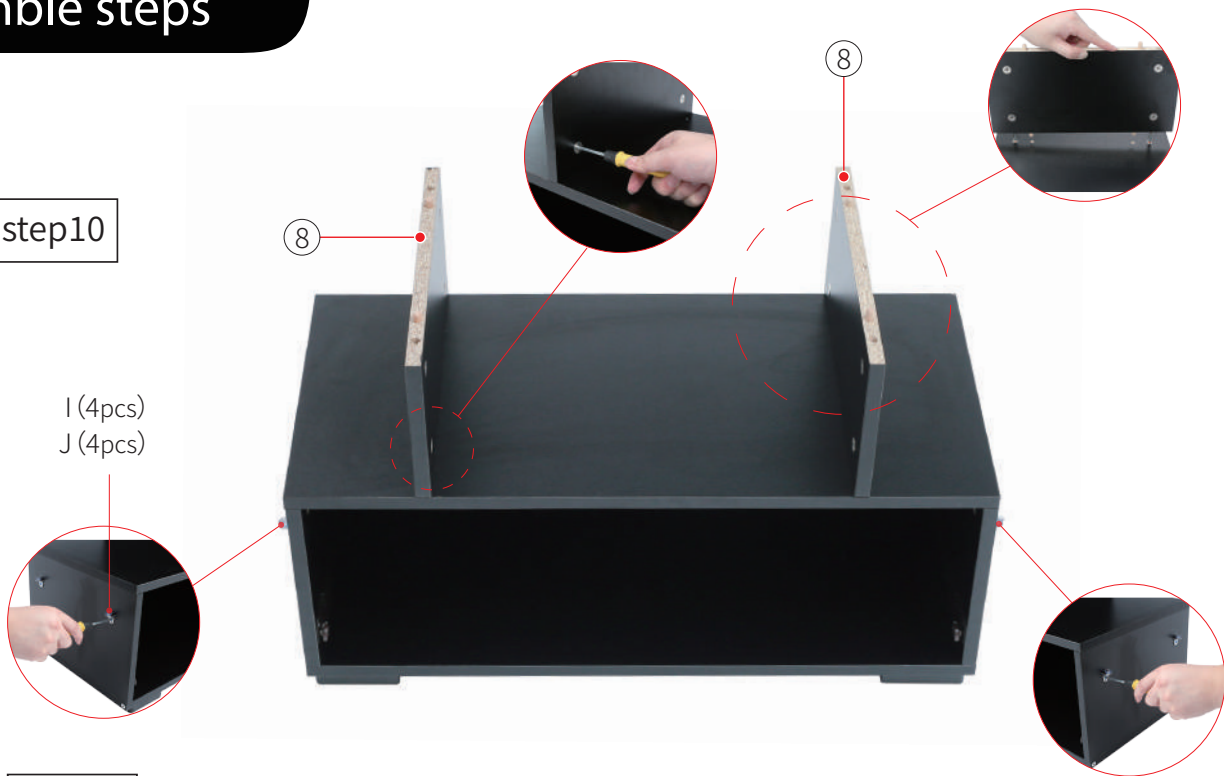


step9

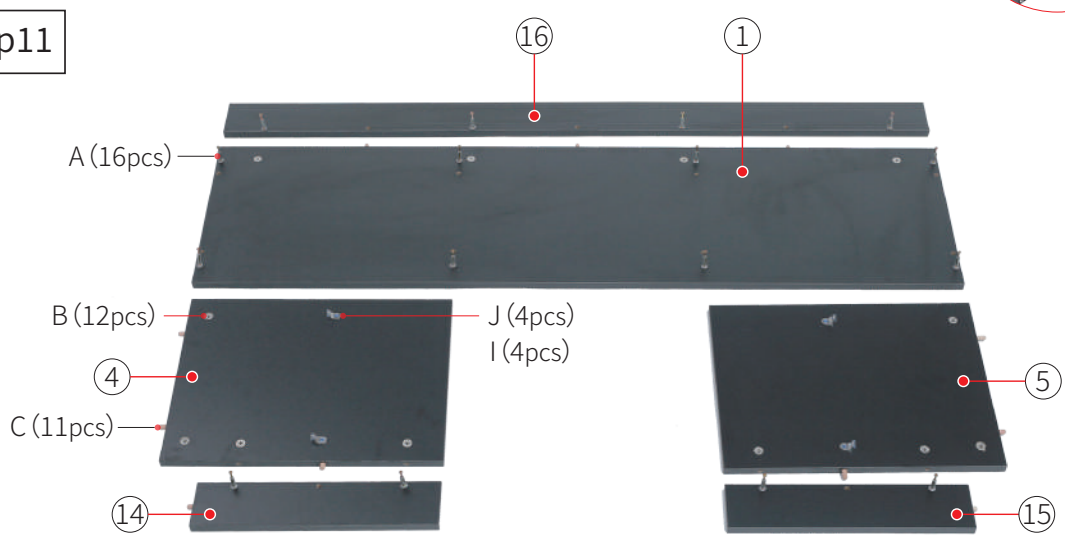


# Assemble steps

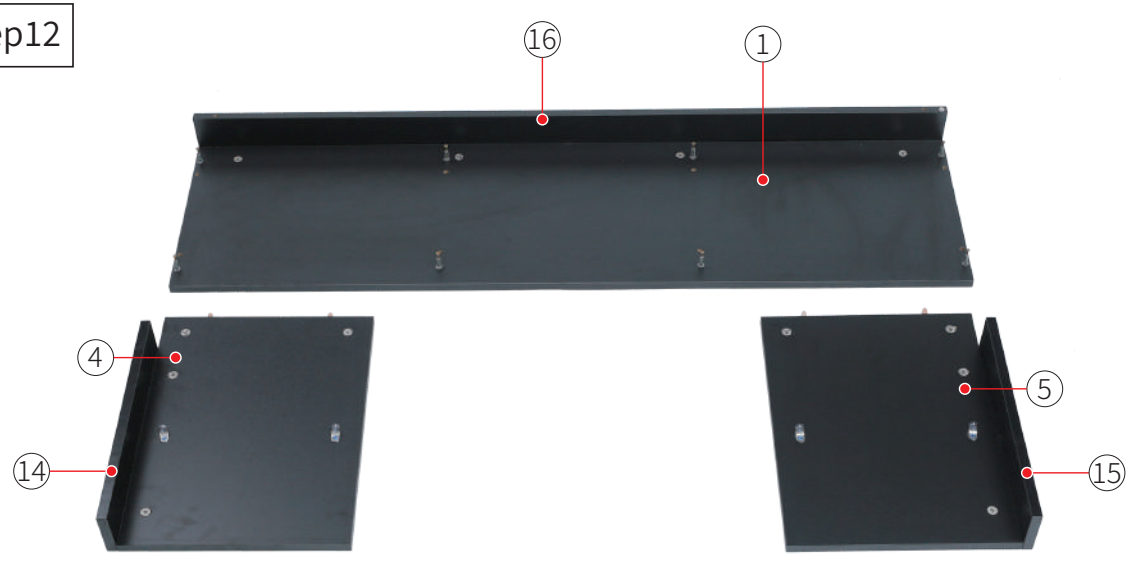
step10



step11

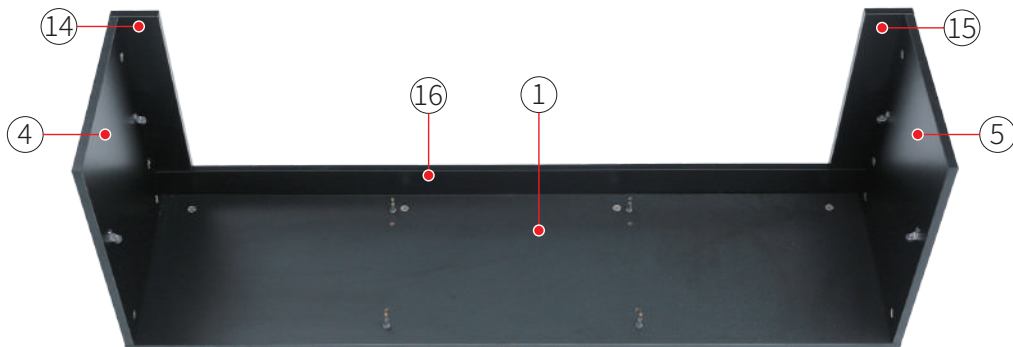


step12





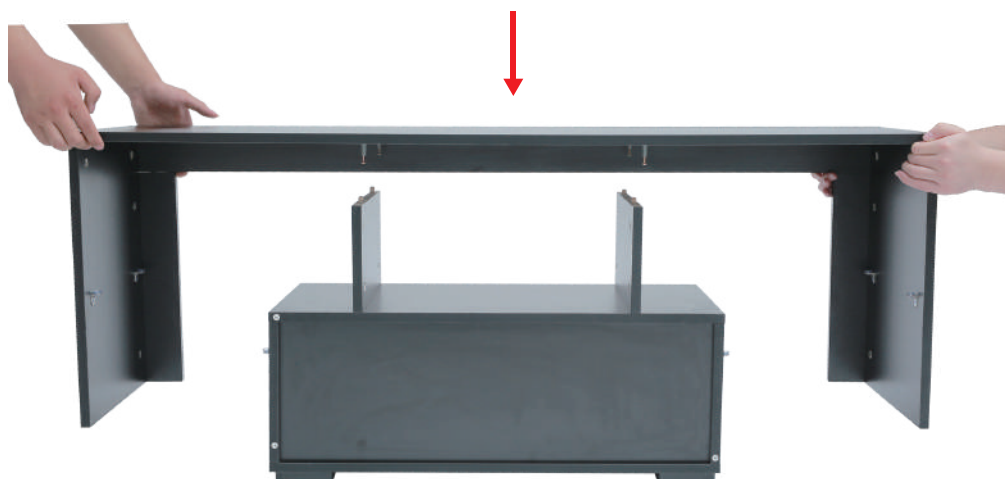
step13



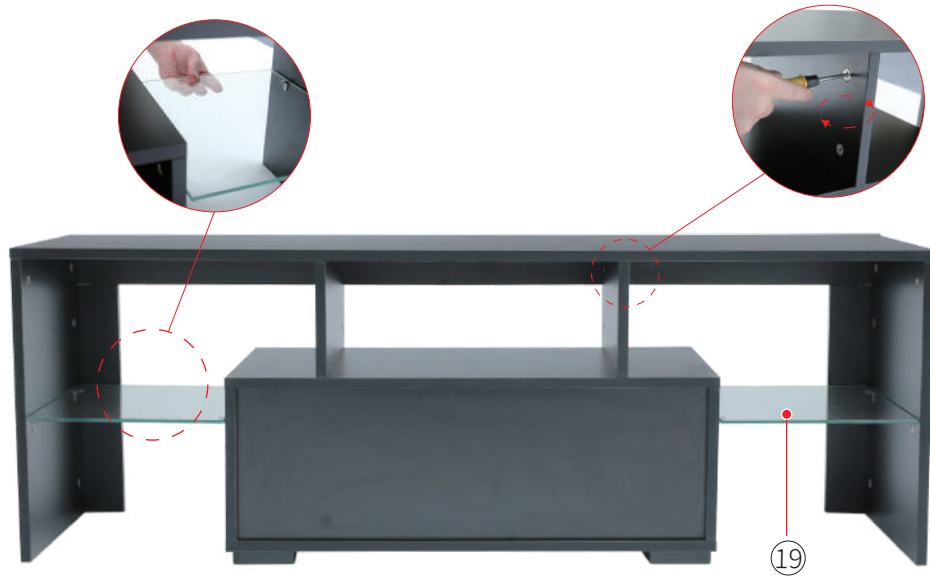
step14



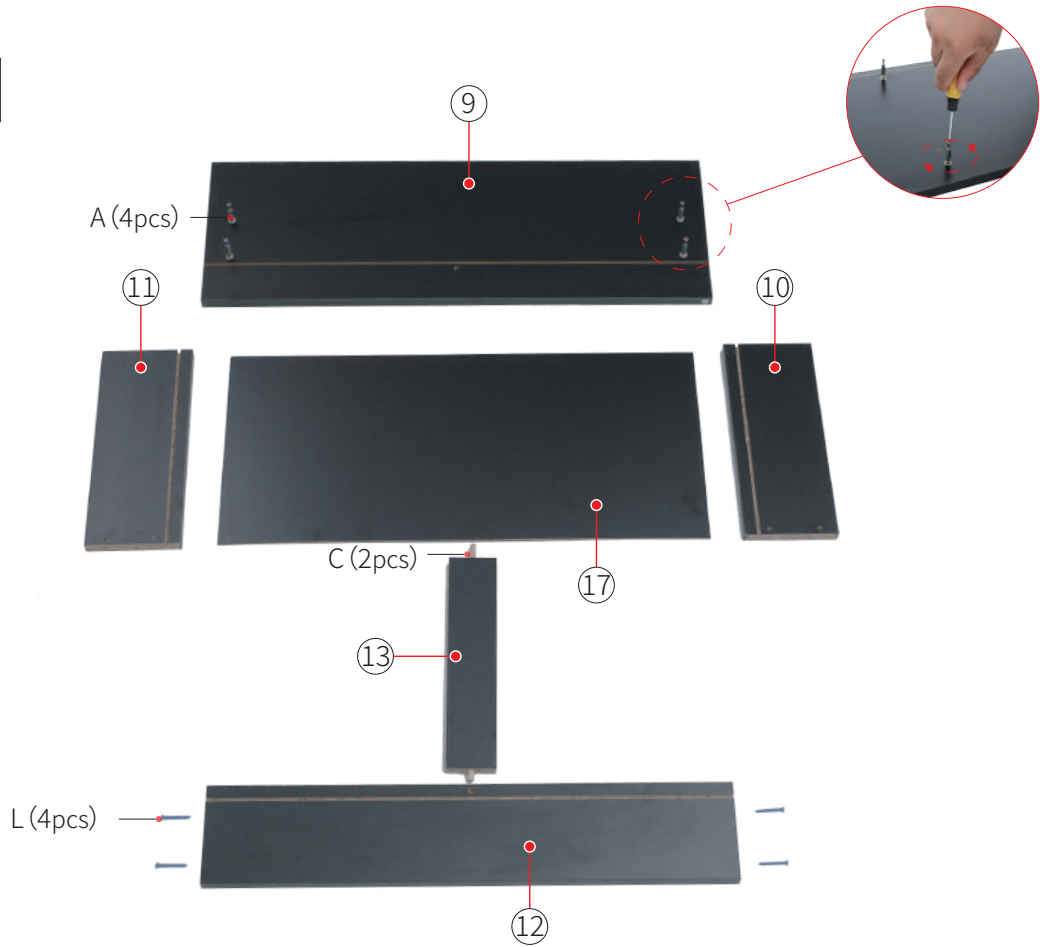
step15



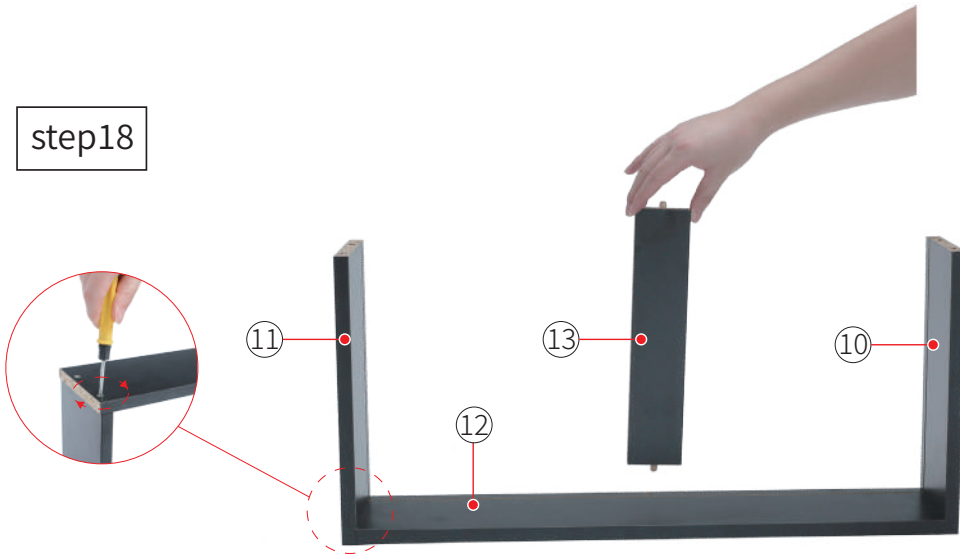
step16



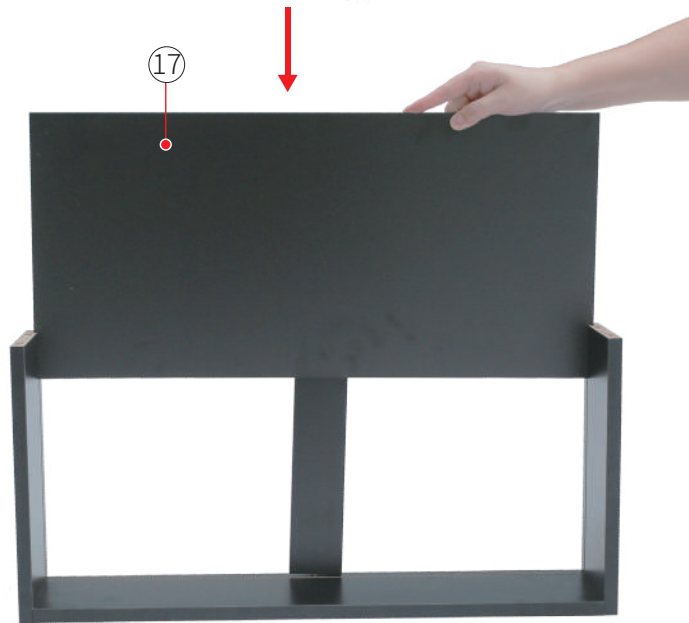
step17



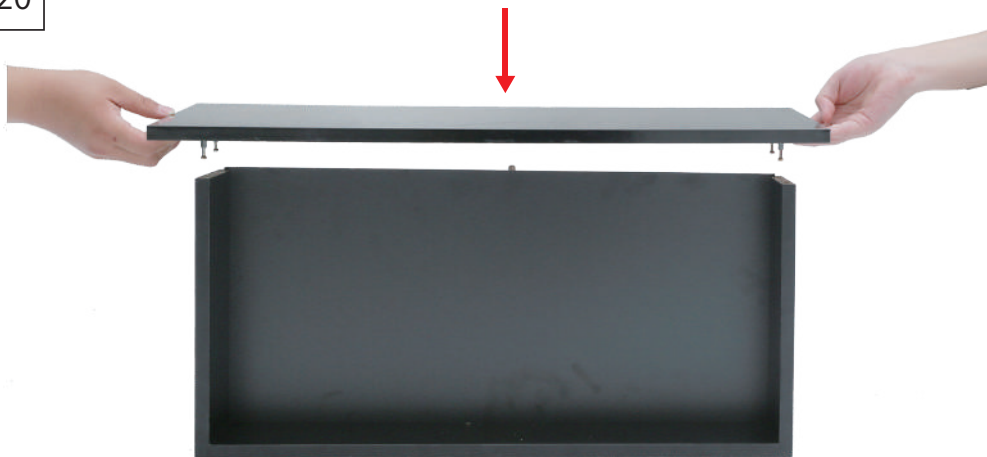
step18



step19



step20



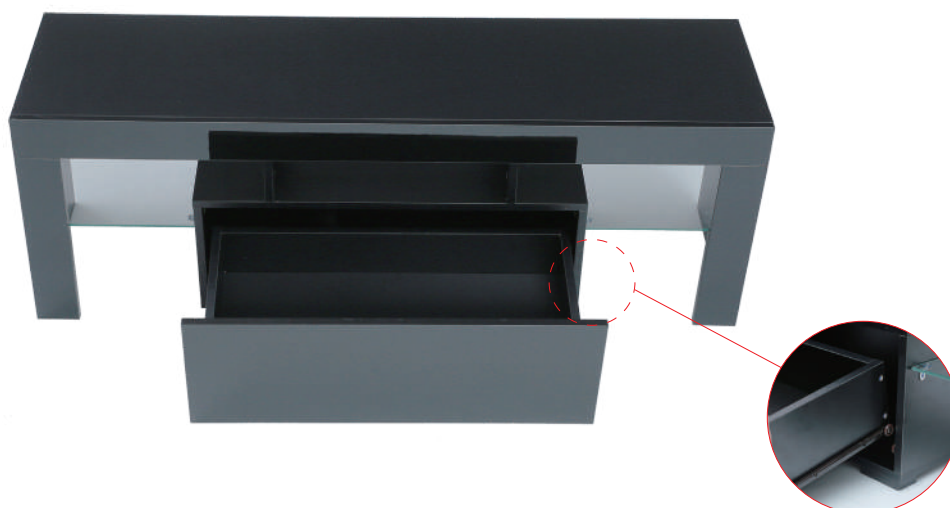
step21



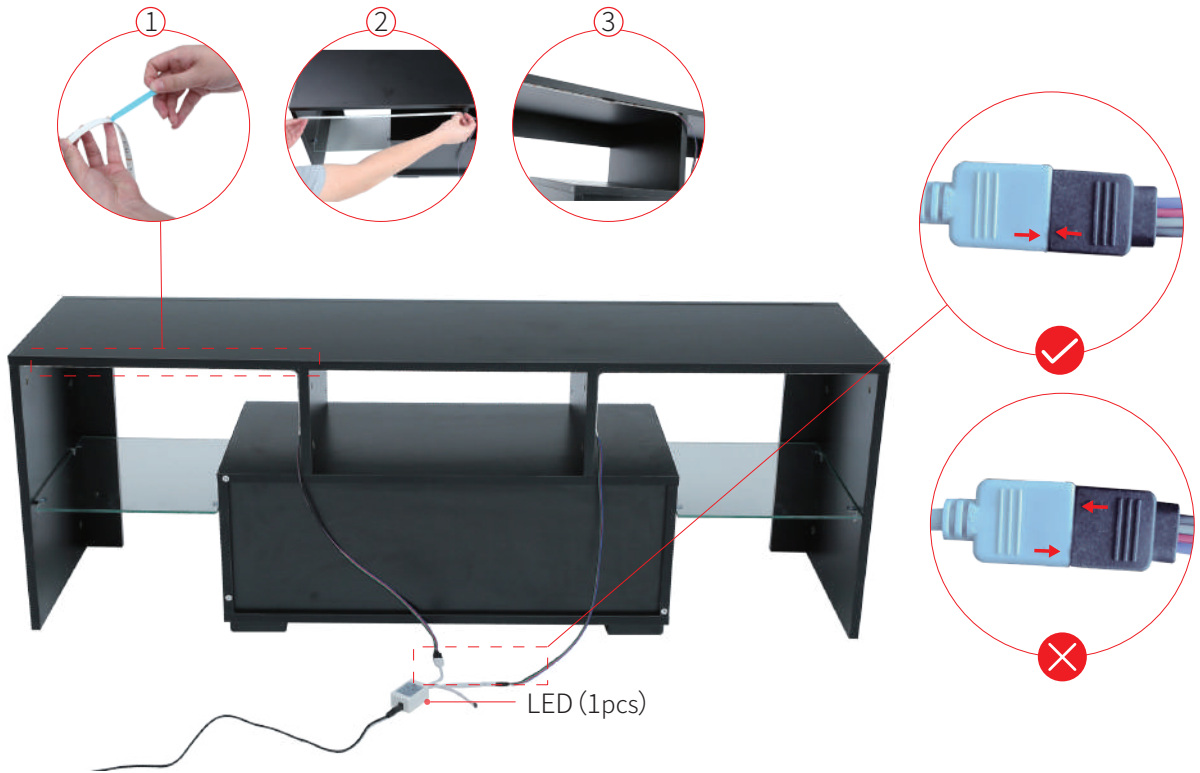
step22



step23



## step24



after the installation was complete, remove the plastic gasket on the remote control, then align the sensor on the LED light for remote operation.

## step25

