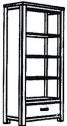




ASSEMBLY INSTRUCTIONS

MODEL :
C63770-ODC/C81080-ODC
OPEN BOOK SHELF

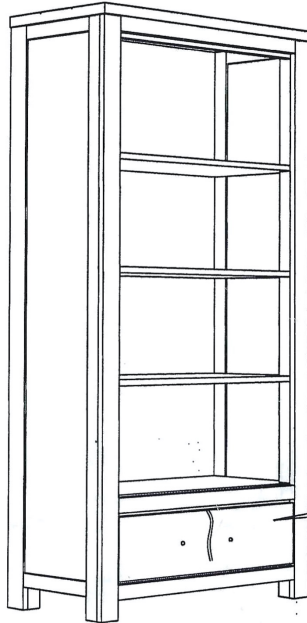
PART LIST

NO	ITEM	QTY
A	 OPEN BOOK SHELF	1 PC

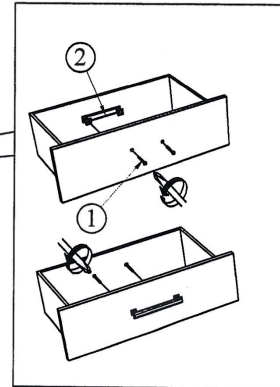
HARDWARE LIST

NO	ITEM	QTY
1	 Truss Head Machine Screw m4x38mm Blk	2 PCS
2	 HANDLE L150mmxW21.6mmxD28mm	1 PC

STEP 1 : Remove HANDLE (2) using a Philips head screw driver as shown in illustration STEP - A. Re-install the HANDLE (2) as per diagram STEP - B. Repeat STEP - A STEP - B until HANDLE (2) are attached correctly.



***FIXED INSIDE DRAWER**



STEP - A

STEP - B

COMPLETED ASSEMBLY

NOTE : MUST TIGHTEN SCREWS PERIODICALLY WITH USE SCREW WILL BECOME LOOSE CHECK TIGHTNESS OF ALL SCREW EVERY 6-8 WEEKS.